

**Technische Hochschule Deggendorf**  
**Fakultät Angewandte Informatik**  
Studiengang Master Angewandte Informatik

ERKENNUNG VON BÖSARTIGEM  
NETZWERKVERHALTEN IN  
ALLIANZ-UNTERNEHMENSNETZWERKDATEN

DETECTION OF MALICIOUS NETWORK BEHAVIOR  
IN ALLIANZ COMPANY NETWORK DATA

Masterarbeit zur Erlangung des akademischen Grades:

*Master of Engineering (M.Eng.)*

an der Technischen Hochschule Deggendorf

Vorgelegt von:  
Aida Nikkhah Nasab  
Matrikelnummer: 22208964

Am: 01. Sep 2024

Prüfungsleitung:  
Prof. Dr. Fischer

Ergänzende Prüfende:  
Zineddine Bettouche



## Erklärung

Name des Studierenden: Aida Nikkhah Nasab

Name des Betreuenden: Prof. Dr. Fischer

Thema der Abschlussarbeit:

Erkennung von böartigem Netzwerkverhalten in Allianz-Unternehmensnetzwerkdaten...

.....  
.....  
.....

1. Ich erkläre hiermit, dass ich die Abschlussarbeit gemäß § 35 Abs. 7 RaPO (Rahmenprüfungsordnung für die Fachhochschulen in Bayern, BayRS 2210-4-1-4-1-WFK) selbständig verfasst, noch nicht anderweitig für Prüfungszwecke vorgelegt, keine anderen als die angegebenen Quellen oder Hilfsmittel benutzt sowie wörtliche und sinngemäße Zitate als solche gekennzeichnet habe.

Deggendorf, .....  
Datum

.....  
Unterschrift des Studierenden

2. Ich bin damit einverstanden, dass die von mir angefertigte Abschlussarbeit über die Bibliothek der Hochschule einer breiteren Öffentlichkeit zugänglich gemacht wird:

- ☐ Nein  
☐ Ja, nach Abschluss des Prüfungsverfahrens  
☐ Ja, nach Ablauf einer Sperrfrist von ...Jahren.

Deggendorf, .....  
Datum

.....  
Unterschrift des Studierenden

---

Bei Einverständnis des Verfassenden vom Betreuenden auszufüllen:

Eine Aufnahme eines Exemplars der Abschlussarbeit in den Bestand der Bibliothek und die Ausleihe des Exemplars wird:

- ☐ Befürwortet  
☐ Nicht befürwortet

Deggendorf, .....  
Datum

.....  
Unterschrift des Betreuenden



# Abstract

In today's rapidly evolving cybersecurity landscape, Allianz Company faces significant threats from advanced persistent threats (APTs), which are sophisticated, stealthy attacks that target large organizations over extended periods. This master thesis focuses on the critical need to strengthen Allianz Company's network security by developing a proactive defense mechanism against these persistent threats. Central to this research is the analysis of the Allianz company user log dataset, which includes essential data such as URLs, hostnames, timestamps, and IP addresses. Currently, threat detection occurs once daily, highlighting the urgency for a more adaptive and responsive defense strategy to keep pace with the evolving nature of APTs.

The research builds on key references that delve into APT characteristics, particularly beaconing behavior, a crucial aspect of APT operations that allows attackers to maintain covert communication. The thesis addresses the challenges faced by large-scale enterprise networks in detecting and mitigating APTs, emphasizing the need for periodicity detection and behavior analysis. These strategies are vital for identifying patterns that indicate APT activity, which often blends in with normal network traffic.

The proposed methodology involves several critical steps: data extraction and preparation, time interval analysis, average power calculation, band-pass filtering, and behavior detection. These components are designed to work together to identify and respond effectively to potential threats within Allianz Company's network. To ensure the accuracy and reliability of this approach, the methodology is validated using simulated datasets and historical data with known security incidents.

This research draws upon six key references that provide a strong foundation for detecting malicious network behavior. These references cover beaconing detection, peer-based tracking, systematic reviews, large-scale DNS log mining, and advanced techniques involving artificial intelligence. The integration of these insights into the proposed framework aims to enhance network security by offering a real-time defense mechanism capable of countering persistent and evolving cybersecurity threats.

In summary, this master thesis presents a comprehensive and systematic exploration of methods to detect and mitigate APTs within Allianz Company's network. By developing a structured and validated methodology informed by foundational research and diverse perspectives, the thesis seeks to significantly improve the organization's ability to defend against sophisticated and persistent cyber threats. This work contributes not only to the academic understanding of APT detection but also offers practical solutions to enhance the security of large enterprises in an increasingly complex threat environment.



# Contents





# 1 Topical Overview

## 1.1 Problem Statement

In today's digital age, protecting sensitive data and ensuring the integrity of network systems are top priorities for organizations. Like many others, Allianz Company produces vast user log data daily. This data contains critical information and is continuously monitored to detect any potential security threats. The increasing complexity and sophistication of cyber-attacks, especially advanced persistent threats (APTs), highlight the need for strong and proactive cybersecurity measures. The main challenge is effectively sifting through this extensive log data to identify signs of malicious behavior and ensure that threats are detected and mitigated quickly. This research aims to improve the company's cybersecurity framework, focusing on early detection of APTs and other potential threats to protect the network infrastructure.

## 1.2 Research Objectives

The main goal of this research is to improve the network security of Allianz Company by finding and using better ways to spot and respond to possible cyber threats. The focus is mainly on advanced persistent threats (APTs), which are known for being sneaky and long-lasting. To do this, the research aims to:

1. **Develop Advanced Detection Techniques:** Create methods to identify potential threats early, focusing on the unique behaviors of APTs.
2. **Implement Proactive Security Measures:** Establish protocols that enable quicker responses to detected threats, reducing the risk of data breaches.
3. **Educate and Train Staff:** Provide training for employees to recognize and respond to potential security threats effectively.
4. **Evaluate and Update Security Policies:** Continuously assess and refine the company's security policies to adapt to new and evolving cyber threats.

### 1.2.1 Research Questions

The research is guided by the following key questions:

- How can beaconing behavior be effectively detected within Allianz Company's network?
- What is the impact of periodicity in network communication on the detection of malicious behavior?

## 1.3 Structure of Thesis

This section outlines the organization of the chapters in this thesis. The structure is designed to systematically address the research objectives and questions outlined above, ensuring a comprehensive understanding of the problem and the proposed solutions.

Chapter 2 provides the essential background necessary for understanding the context of this research. It begins with an introduction that sets the stage for the subsequent discussions. This chapter delves into the cybersecurity landscape, highlighting the current state of cybersecurity and the challenges enterprises face. It then explores advanced persistent threats (APTs) and their covert tactics, providing a detailed examination of how these threats operate and the sophisticated methods they employ. Additionally, this chapter discusses enterprise networks, focusing on their structure, functionality, and the inherent vulnerabilities that make them targets for cyberattacks. Finally, it introduces the concept of periodicity in network communication, explaining its relevance to detecting malicious activities.

Chapter 3 is dedicated to a review of related work. It begins with an overview of the BAYWATCH framework, then an exploration of various methods for APT beaconing detection. The chapter then discusses peer-based tracking techniques and presents a systematic review of the literature on APT beaconing detection. Further, it examines the use of DNS logs for malware beaconing detection and the application of AI-driven approaches to identify malicious beaconing. The chapter concludes with a discussion on local periodic communication behavior, providing a comprehensive overview of existing research and highlighting gaps that this thesis aims to address.

Chapter 4 focuses on the methodology adopted for this research. It begins with the design of the proposed method, outlining the theoretical foundation and the rationale behind the chosen approach. This is followed by a detailed description of data extraction and preparation processes, ensuring the data used is both relevant and reliable. The chapter also covers data preprocessing techniques, time interval analysis, and data enhancement methods. Band-pass filtering is introduced as an important step in the methodology, followed by a discussion on the evaluation criteria used to assess the effectiveness of the proposed solution.

Chapter 5 details the implementation of the proposed method. It starts with an explanation of the experimental setup, describing the environment and tools used for the experiments. This chapter also introduces a whitelisting mechanism for URL filtering, aimed at reducing false positives. It then describes the process of average power calculation and the application of band-pass filtering to the data. The chapter concludes with a discussion on behavior detection, explaining how the proposed method identifies malicious activities.

Chapter 6 presents the experiments conducted to validate the proposed method. It includes sections on validation and testing, detailing the procedures and metrics used to assess the performance of the method. An in-depth analysis of the algorithm's output is provided, focusing on the detection of malicious behavior. This chapter aims to demonstrate the efficacy of the proposed method through empirical evidence.

Chapter 7 covers the results and discussions, summarizing the key findings of the research. It provides a critical analysis of the results, discussing their implications and relevance to the field of cybersecurity. This chapter also highlights the contributions of the research, emphasizing how it advances the current state of knowledge.

Chapter 8 concludes the thesis by summarizing the main findings and providing insights into future work. It outlines potential avenues for further research, suggesting how the proposed method can be refined and extended. This chapter aims to provide a comprehensive conclusion to the thesis, tying together the various elements and emphasizing the significance of the research. In summary, the structure of this thesis is designed to provide a logical and coherent progression from background information and related work to methodology, implementation, experiments, and results, culminating in a comprehensive conclusion and suggestions for future research.



## 2 Background

This chapter provides the essential background necessary for understanding the context of this research. It begins with an overview of the cybersecurity landscape, emphasizing the current state, emerging trends, and persistent challenges faced by organizations. It then explores Advanced Persistent Threats (APTs) and their sophisticated, covert tactics that pose significant risks to enterprise networks. The discussion also covers the concept of periodicity in network communication, crucial for detecting anomalies in cybersecurity contexts. Finally, the chapter delves into the role of time series databases, with a specific focus on InfluxDB, in managing and analyzing the vast amounts of data generated in cybersecurity operations.

The field of cybersecurity is continually evolving, with new threats emerging as technology advances. Understanding these threats and the strategies to counter them is crucial for protecting sensitive information, ensuring the continuity of operations, and maintaining the integrity of enterprise networks. This chapter lays the foundation for the research by discussing key concepts and technologies relevant to cybersecurity, setting the stage for the detailed analysis and solutions proposed in subsequent chapters.

### 2.1 Cybersecurity Landscape

The cybersecurity landscape is characterized by a dynamic and increasingly complex environment where various types of cyber threats continually evolve. Organizations across the globe face numerous challenges in protecting their networks, data, and systems from these threats, which range from malware and ransomware to sophisticated nation-state attacks.

Cybersecurity encompasses a wide range of practices, technologies, and strategies aimed at safeguarding information and systems from unauthorized access, damage, or disruption. It involves both proactive measures, such as implementing robust security architectures and practices, and reactive measures, such as incident response and recovery strategies.

Figure ?? presents a global map of cybersecurity threats, illustrating the widespread nature of these challenges. This visualization highlights regions most affected by various types of cyber attacks, underscoring the global reach and impact of cyber threats.

#### 2.1.1 Emerging Trends and Challenges

The rapid digitization of industries, the increasing reliance on cloud services, and the proliferation of Internet of Things (IoT) devices have significantly expanded the attack surface for cyber threats. These developments, while beneficial, have introduced new vulnerabilities that attackers are quick to exploit. Additionally, the rise of ransomware as a service (RaaS) and the growing sophistication of phishing attacks reflect the evolving threat landscape.

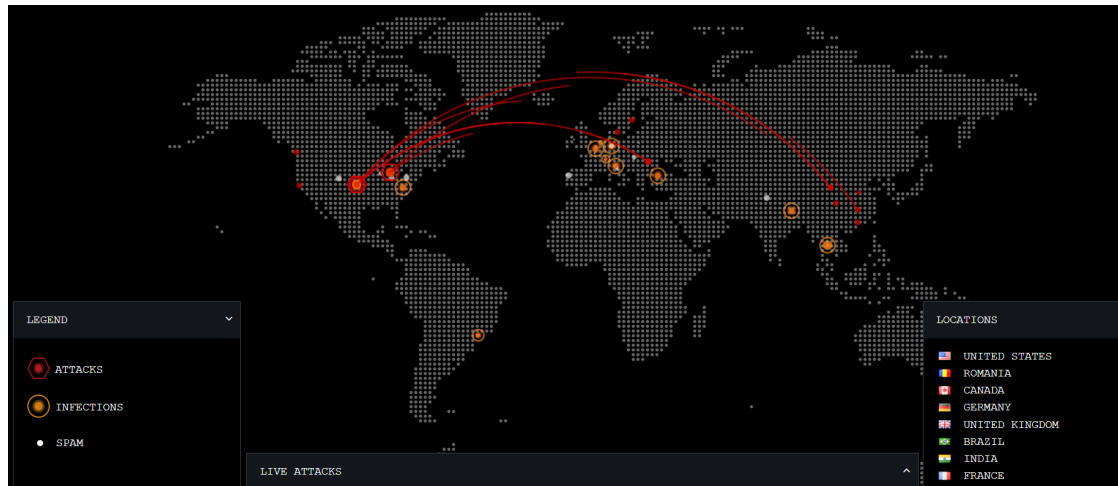


Figure 2.1: Global cybersecurity threat map [?]

Another significant challenge is the shortage of skilled cybersecurity professionals, which hampers the ability of organizations to effectively defend against these threats. This gap is exacerbated by the complexity of modern networks and the need for advanced tools and techniques to detect and mitigate sophisticated attacks.

## 2.2 Advanced Persistent Threats (APTs) and Covert Tactics

Advanced Persistent Threats (APTs) represent one of the most sophisticated and dangerous forms of cyber attacks. APTs involve prolonged, targeted efforts by attackers, typically state-sponsored or highly organized criminal groups, aimed at stealing sensitive information, disrupting operations, or compromising critical infrastructure. Unlike traditional cyber attacks, which may be opportunistic and short-lived, APTs are characterized by their stealth, persistence, and the significant resources devoted to them.

Figure ?? illustrates the lifecycle of an APT attack, highlighting the various stages involved, from initial reconnaissance to exfiltration of data. Understanding these stages is crucial for developing effective detection and mitigation strategies.

APT actors employ various covert tactics to remain undetected and achieve their objectives. Some of these tactics include:

- **Spear Phishing:** Crafting highly personalized email messages that appear legitimate to the recipient. These emails are designed to trick recipients into clicking on malicious links or attachments, leading to the compromise of their credentials or systems.
- **Zero-Day Exploits:** Exploiting previously unknown vulnerabilities in software or hardware, which have not yet been patched by the vendor. This allows attackers to gain unauthorized access to systems without triggering existing security defenses.

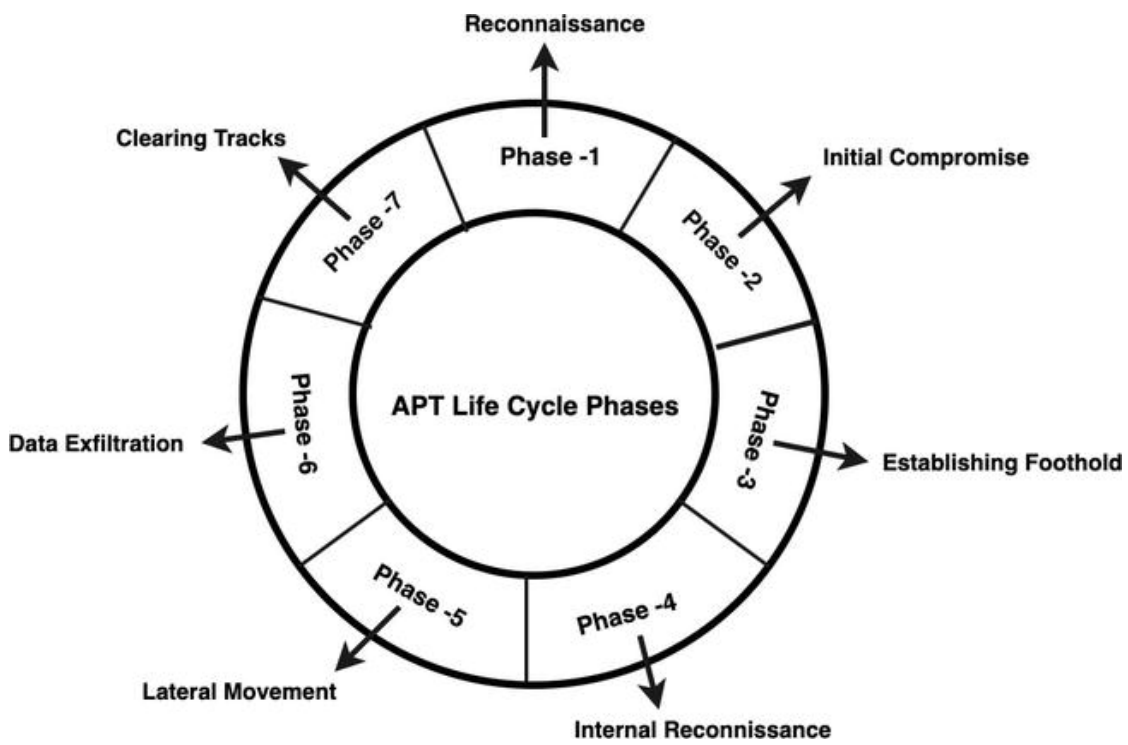


Figure 2.2: APT attack lifecycle [?]

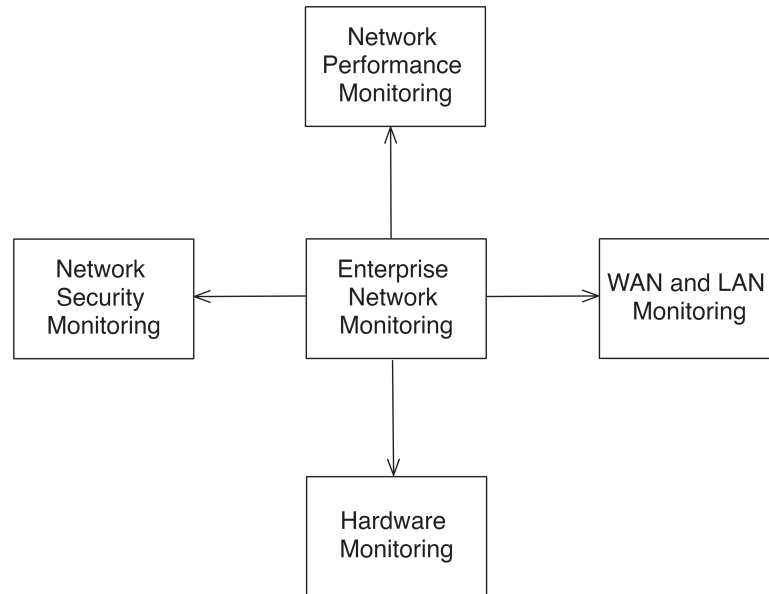


Figure 2.3: Enterprise network diagram

- **Lateral Movement:** After gaining initial access, attackers move within the compromised network, exploring and compromising additional systems to find and exfiltrate valuable data. This tactic often involves the use of legitimate administrative tools to avoid detection.
- **Command and Control (C2):** Establishing a secure communication channel with the compromised systems to remotely control them, issue commands, and exfiltrate data.

### 2.2.1 Case Studies of APT Attacks

Prominent examples of APT attacks include the Stuxnet worm, which targeted Iran's nuclear program, and the SolarWinds breach, which compromised numerous U.S. government agencies and corporations. These cases underscore the potential impact of APTs on national security and global business operations.

## 2.3 Enterprise Networks

Enterprise networks are the backbone of modern organizations, providing the necessary infrastructure for communication, data sharing, and operational efficiency. However, their complexity and scale make them attractive targets for cyber attackers. Understanding the architecture, components, and vulnerabilities of enterprise networks is essential for developing effective cybersecurity strategies.

Figure ?? provides a visual representation of an enterprise network, illustrating the various components such as servers, workstations, routers, and communication links, as well as



potential points of vulnerability.

### 2.3.1 Key Aspects of Enterprise Networks

Enterprise networks typically consist of multiple interconnected subsystems, including:

- **Network Architecture:** The physical and logical design of the network, including the layout and interconnection of routers, switches, firewalls, and other network devices. A well-designed architecture enhances security by segmenting the network and controlling traffic flow.
- **Security Protocols:** Protocols such as TLS (Transport Layer Security) and IPSec (Internet Protocol Security) protect data in transit. Additionally, firewalls, intrusion detection/prevention systems (IDS/IPS), and encryption mechanisms are employed to safeguard data and systems.
- **Access Controls:** Policies and technologies that regulate who can access specific data and resources within the network. This includes user authentication, role-based access control (RBAC), and multi-factor authentication (MFA) to ensure that only authorized personnel can access sensitive information.
- **Network Monitoring and Management:** Tools and practices for monitoring network traffic, identifying anomalies, and managing network resources to maintain performance and security.

### 2.3.2 Vulnerabilities in Enterprise Networks

Despite the implementation of robust security measures, enterprise networks remain vulnerable to a variety of threats, including:

- **Insider Threats:** Employees or contractors with legitimate access who misuse their privileges, either maliciously or negligently.
- **Advanced Malware:** Malware is designed to bypass traditional security measures, often delivered through phishing attacks or drive-by downloads.
- **Misconfigurations:** Incorrectly configured devices or systems that leave the network open to exploitation.
- **Supply Chain Attacks:** Attacks that target the software or hardware supply chain, introducing vulnerabilities that can be exploited after deployment.

## 2.4 Periodicity in Network Communication

Periodicity in network communication refers to the recurring patterns observed in network traffic over time. Detecting and analyzing these patterns can provide valuable insights into

normal and anomalous behavior within the network. In cybersecurity, periodicity analysis is particularly useful for identifying stealthy activities, such as those conducted by APTs, which may generate periodic communication to maintain control over compromised systems.

### 2.4.1 Importance in Cybersecurity

Understanding periodicity is crucial for the following reasons:

- **Anomaly Detection:** Deviations from established periodic patterns can indicate the presence of malware or other malicious activities.
- **Traffic Analysis:** Analyzing periodic traffic can help in identifying command and control (C2) communications used by attackers.
- **Resource Optimization:** Periodicity analysis can be used to optimize network resources by predicting traffic loads and adjusting resources accordingly.

## 2.5 Time Series Databases

Time series databases are specialized databases designed to handle time-stamped or time-series data efficiently. This type of data is common in network activity logs, sensor readings, financial transactions, and many other applications where the sequence and timing of data points are critical. Time series databases are optimized for high-frequency data writes and efficient queries over time intervals, making them ideal for use in monitoring, alerting, and anomaly detection in cybersecurity contexts.

### 2.5.1 Characteristics of Time Series Databases

Time series databases differ from traditional relational databases in several key ways:

- **Time-Optimized Storage:** Data is stored in a way that optimizes retrieval by time, enabling fast queries across large datasets.
- **Efficient Data Compression:** Given the often high volume of data, time series databases employ advanced compression techniques to reduce storage requirements.
- **High Throughput:** They are optimized to handle high-frequency data writes and queries, ensuring efficient data handling even under heavy load.
- **Querying Capabilities:** Time series databases support complex querying over time intervals, which is essential for trend analysis and anomaly detection.

### 2.5.2 InfluxDB

InfluxDB is a popular time series database known for its high performance and ease of use. It is optimized for handling large-scale time-series data, providing powerful querying capabilities and efficient storage.

### Key Features of InfluxDB

- **Time-Optimized Storage:** InfluxDB uses a custom storage engine that efficiently writes and reads time-series data.
- **High Throughput:** It can handle high write and query loads, making it suitable for large-scale monitoring applications.
- **SQL-like Query Language (Flux):** InfluxDB offers a powerful query language that is both easy to learn and capable of complex data manipulations.
- **Retention Policies:** Users can define retention policies to manage data lifecycle, automatically deleting old data to save storage.
- **Integrations:** InfluxDB integrates well with other tools and platforms, supporting various data inputs and outputs.

### Applications in Cybersecurity

InfluxDB can be employed in cybersecurity for:

- **Real-Time Monitoring:** Capturing and analyzing live data to detect anomalies and potential threats.
- **Historical Analysis:** Storing historical data for trend analysis and forensic investigations.
- **Alerting:** Setting up alerts based on specific criteria to notify administrators of suspicious activities.
- **Visualization:** Integrating with visualization tools like Grafana to create dashboards that display network metrics and security insights.

Figure ?? illustrates the architecture of InfluxDB and how data flows through the system, from ingestion to querying and visualization.

## 2.6 Summary

This chapter has provided a comprehensive overview of the cybersecurity landscape, APTs and their covert tactics, enterprise networks, periodicity in network communication, and time series databases, with a detailed focus on InfluxDB. These foundational topics are essential for understanding the subsequent chapters, which will delve deeper into related work, methodology, implementation, experiments, and results. The knowledge gained from this background will inform the development and evaluation of advanced techniques for detecting and mitigating cyber threats in enterprise networks.

## 2 Background

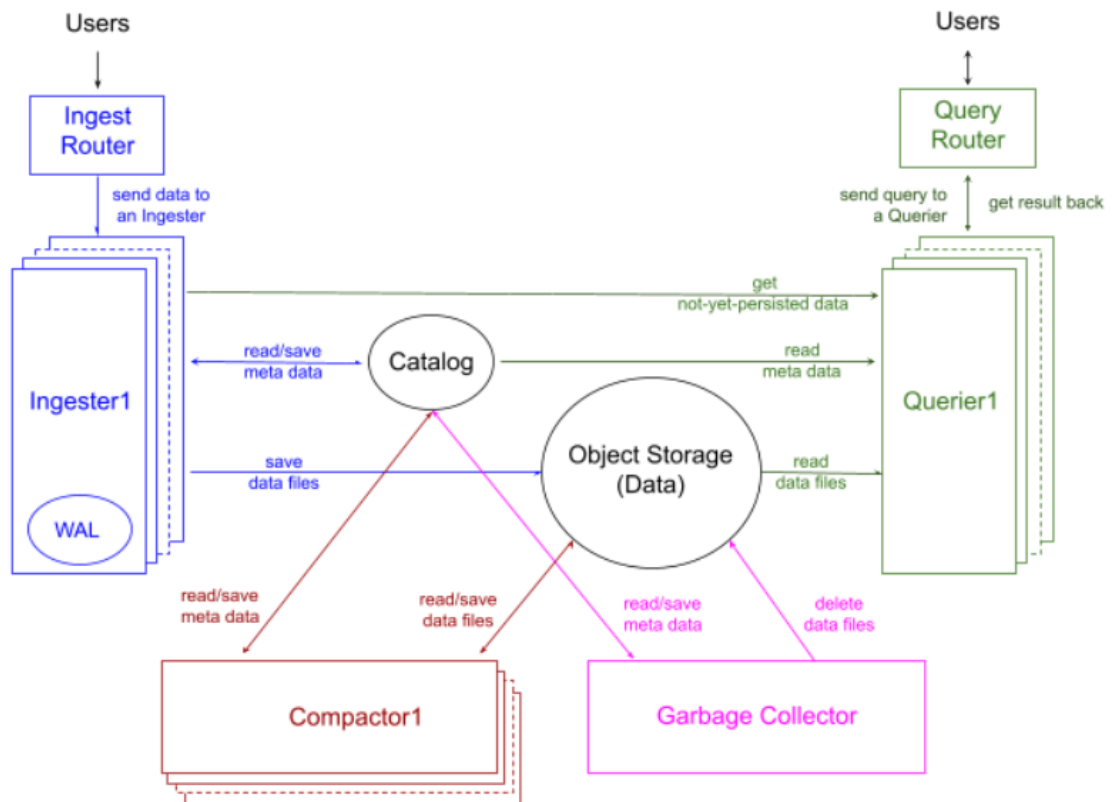


Figure 2.4: InfluxDB Architecture [?]

### 3 Related Work

Hu et al. (2016) proposed BAYWATCH, a robust beaconing detection method designed to identify infected hosts in large-scale enterprise networks [?]. The method focuses on detecting beaconing behavior, which is commonly exhibited by compromised hosts communicating with external command and control servers. By analyzing network traffic patterns, BAYWATCH can efficiently detect infected devices while minimizing false positives. The system is specifically designed to scale in large enterprise environments, making it suitable for real-world deployment. The authors validate BAYWATCH through extensive evaluation using real-world network traffic, demonstrating its effectiveness in identifying infected hosts and improving network security.

Zhang et al. (2023) introduced a global analysis approach for aggregation-based beaconing detection across large campus networks [?]. Their method focuses on detecting beaconing behavior in network traffic by aggregating data from multiple sources within a campus network, which enhances detection accuracy. The approach is designed to scale across large networks and aims to minimize false positives by leveraging aggregation techniques. The authors validate their method through extensive experiments on real-world campus networks, demonstrating its effectiveness in identifying compromised hosts and improving network security in large-scale environments.

Apruzzese et al. (2017) proposed a method for identifying malicious hosts involved in periodic communications [?]. Their approach focuses on detecting abnormal periodic communication patterns in network traffic, which are often indicative of compromised hosts communicating with external servers. The authors introduce a novel technique for identifying such hosts by analyzing the timing and frequency of communication sessions. The proposed method is evaluated through experiments, demonstrating its effectiveness in identifying malicious hosts and enhancing network security by targeting irregular communication patterns.

Seo and Lee (2018) proposed an abnormal behavior detection method to identify infected systems using the APChain algorithm and behavioral profiling [?]. Their approach focuses on analyzing system behavior to detect deviations from normal activity, which may indicate the presence of malware or compromised systems. The APChain algorithm is used to model and track the behavior of systems, allowing for the identification of anomalous patterns associated with infected hosts. The authors validate their method through experiments, demonstrating its effectiveness in detecting abnormal behaviors and enhancing system security in real-world environments.

Huynh et al. (2016) focused on uncovering periodic network signals of cyber attacks [?]. The paper explores how periodic network traffic patterns can indicate cyber attacks, particularly in the context of detecting covert channels used by attackers for command and control. The authors propose a method to identify such periodic signals by analyzing network traffic over time. Their approach highlights the importance of periodicity in revealing malicious ac-

### 3 Related Work

tivity and introduces a visualization technique to facilitate the detection of these patterns. The study contributes to improving network security by enabling better detection of stealthy attack signals.

Jang et al. (2021) proposed a method for detecting malicious beaconing communities using lockstep detection and co-occurrence graphs [?]. The paper introduces an innovative approach to identifying groups of compromised hosts involved in coordinated beaconing behavior, a common indicator of malicious activity. By using lockstep detection and analyzing the co-occurrence of network events, the method can effectively pinpoint these malicious communities. The authors present this approach as part of a patent (US Patent 10,887,323), contributing to the detection of advanced persistent threats (APTs) and enhancing network security by identifying coordinated attacks.

Talib et al. (2022) conducted a systematic review on APT beaconing detection techniques [?]. The paper provides an extensive analysis of various methods used to detect Advanced Persistent Threats (APT) based on beaconing behavior, which is a common communication pattern in APT attacks. The authors review different detection techniques, including signature-based, anomaly-based, and machine learning methods, highlighting their strengths and limitations in identifying beaconing activities in network traffic. This review serves as a valuable resource for researchers and practitioners aiming to enhance APT detection and improve network security against sophisticated cyber threats.

Charan et al. (2021) explored the use of data mining and machine learning techniques for Advanced Persistent Threat (APT) attribution and detection in their study on DMAPT [?]. The paper focuses on the application of various data mining and machine learning methods to improve the identification and attribution of APTs, which are often difficult to detect due to their stealthy nature. The authors discuss the effectiveness of different approaches in detecting APTs and their potential for enhancing threat detection capabilities in network security. The study provides valuable insights into the role of advanced analytics in tackling sophisticated cyber threats.

Hagan et al. (2018) proposed a peer-based tracking method using multi-tuple indexing for network traffic analysis and malware detection [?]. The approach aims to improve malware detection by analyzing network traffic patterns using multi-tuple indexing, which allows for more efficient tracking of peer interactions in the network. By examining the flow of traffic between different peers, the method identifies suspicious activities that may indicate the presence of malware. The authors validate their technique through experiments, demonstrating its effectiveness in detecting malicious traffic and enhancing network security by providing a more granular analysis of peer behavior.

Shalaginov et al. (2016) focused on malware beaconing detection by mining large-scale DNS logs for targeted attack identification [?]. The paper explores the use of DNS logs to detect beaconing behavior, which is commonly associated with malware communicating with external command and control servers. By analyzing large-scale DNS traffic data, the authors propose a method to identify targeted attacks based on the periodic patterns of beaconing. Their approach highlights the importance of leveraging DNS traffic for identifying malware infections, contributing to enhanced detection capabilities in large-scale network environments.

Yeh et al. (2018) investigated a malware beacon of botnet by analyzing local periodic communication behavior [?]. The paper focuses on identifying malware beaconing behavior in botnets

by studying the periodic communication patterns between infected hosts and their command and control servers. The authors propose a method to detect these periodic behaviors, which are typically used by botnets to maintain control over compromised systems. Their approach highlights the importance of analyzing local traffic patterns for detecting botnet infections and contributes to improving malware detection techniques through the identification of communication anomalies.

Borchani (2020) proposed an advanced approach to malicious beaconing detection using Artificial Intelligence (AI) [?]. The paper explores the application of AI techniques, particularly machine learning algorithms, to enhance the detection of beaconing behavior associated with malicious activity. By leveraging AI, the author aims to improve the accuracy and efficiency of detecting beaconing patterns that indicate compromised hosts within a network. The study demonstrates the potential of AI to significantly improve the detection and mitigation of threats posed by beaconing malware, contributing to more effective network security solutions.

Enright et al. (2022) introduced a learning-based zero-trust architecture for 6G and future networks [?]. The paper explores the integration of machine learning with zero-trust security models to address the evolving security challenges in next-generation networks, particularly 6G. The authors propose a framework that combines learning-based techniques with zero-trust principles to enhance the detection of malicious activity and improve overall network security. The study contributes to the development of more adaptive and robust security architectures for future networks, offering a promising solution to the emerging threats in 6G environments.

Van Ede et al. (2022) introduced Deepcase, a semi-supervised contextual analysis method for security events [?]. The paper presents a novel approach that combines semi-supervised learning techniques with contextual analysis to enhance the detection of security events. By leveraging contextual information, Deepcase can identify complex patterns and relationships in security data, improving the accuracy of event classification and anomaly detection. The authors demonstrate the effectiveness of their approach in real-world security environments, showing its potential to enhance the detection and response capabilities of security systems in large-scale networks.

Ongun et al. (2021) introduced PORTFILER, a port-level network profiling approach for detecting self-propagating malware [?]. The paper presents a novel method that profiles network traffic at the port level to identify self-propagating malware, which often uses specific ports for communication and propagation. PORTFILER analyzes network behavior to detect irregularities and patterns associated with malware activity. By focusing on port-level communication, the approach improves malware detection, providing more accurate identification of self-propagating threats in real-time. The authors demonstrate the effectiveness of their method through experiments, showing its potential to enhance network security against rapidly spreading malware.

Niu et al. (2020) proposed a method for detecting malware on the Internet of Unmanned Aerial Vehicles (IoUAVs) by combining string matching and Fourier transformation techniques [?]. The paper addresses the growing concern of malware targeting UAV networks and introduces a hybrid approach that leverages string matching for identifying suspicious patterns in network traffic and Fourier transformation for analyzing periodic behaviors associated with malware. By combining these techniques, the authors enhance the detection accuracy of malicious activities, offering a more robust solution to securing UAV-based networks. The study

### 3 Related Work

contributes to the advancement of IoT security, particularly in the context of UAV systems, which are increasingly vulnerable to cyberattacks.

Duan et al. (2018) presented an approach for the automated generation and selection of interpretable features for enterprise security [?]. The paper focuses on improving enterprise security by developing methods for automatically generating and selecting meaningful, interpretable features from large datasets. These features can be used in security models to detect anomalies and potential threats more efficiently. The authors propose a framework that integrates automated feature engineering with machine learning techniques to enhance security monitoring systems. Their work contributes to the field by improving the interpretability and performance of security analytics, making it easier for security teams to understand and respond to potential threats.

Haffey et al. (2018) focused on modeling, analyzing, and characterizing periodic traffic on a campus edge network [?]. The paper explores the behavior of periodic traffic patterns in campus networks, which are often indicative of scheduled communications, including those used by malware. The authors propose models to better understand and quantify these traffic patterns, helping to distinguish between legitimate and potentially malicious activities. Their work provides insights into how periodic traffic can be leveraged to enhance network security, particularly in the detection of botnets and other forms of malware that use regular communication intervals.

Recent research has focused on various aspects of enterprise security and malicious activity detection. Oprea et al. (2018) introduced MADE, a security analytics framework designed to enhance threat detection in enterprise environments [?]. The framework leverages advanced analytics to detect potential threats by analyzing large volumes of security data, enabling organizations to respond more effectively to cyber incidents. Ukrop et al. (2019) investigated the perception of IT professionals regarding the trustworthiness of TLS certificates, highlighting challenges in assessing certificate legitimacy and its implications for secure communications [?]. In a related study, Vissers et al. (2017) explored the ecosystem of malicious domain registrations within the .eu top-level domain (TLD), providing insights into the strategies used by attackers to exploit domain registration systems for malicious purposes [?]. Together, these works contribute to the broader understanding of security challenges in modern networks and propose solutions to improve detection and mitigation strategies. Oprea et al. (2018) proposed MADE, a security analytics framework aimed at enhancing enterprise threat detection capabilities [?]. The framework utilizes advanced data analytics to process and analyze vast amounts of security-related data from enterprise environments. By employing techniques such as anomaly detection and pattern recognition, MADE identifies potential threats, including advanced persistent threats (APTs) and insider attacks. This approach enables organizations to detect and respond to cyber threats more effectively, reducing the risk of security breaches. The study highlights the importance of scalable and interpretable security analytics in modern enterprise networks.



## 4 Methodology

This chapter initiates a comprehensive exploration of the dataset, providing a detailed introduction to its various aspects and components. By thoroughly examining the dataset, the chapter aims to establish a solid foundation for the subsequent analyses. It begins by describing the origins and nature of the dataset, including its structure, the types of data included, and the context in which it was collected. This includes an overview of the dataset's dimensions, variables, and any relevant metadata that is critical for understanding its scope and limitations.

Following this introduction, the process of data generation is elaborated upon. The data generation process is central to the research, ensuring the reliability and validity of the findings. Each step involved in generating the data is outlined, starting from the initial conceptualization to the final implementation. This section covers the design choices made, the tools and technologies used, and the protocols followed to collect and process the data. By providing a step-by-step explanation, the methodology is made transparent and reproducible.

Additionally, the specific functions and algorithms employed at each stage of the data generation process are detailed. This includes a discussion of the rationale behind selecting certain methods over others, as well as the practical considerations that influenced these decisions. Insights are offered into how these functions contribute to the overall data generation process and how they impact the quality and integrity of the dataset. Examples of code snippets, flowcharts, and diagrams may be included to illustrate the implementation process more clearly.

This thorough examination of both the dataset and the data generation process sets the stage for the subsequent analyses and findings presented in the following chapters. By laying this groundwork, the chapter ensures that readers have a comprehensive understanding of the data and the methodology, which is key for interpreting the results and conclusions of the research. This foundational knowledge will facilitate a deeper appreciation of the analyses conducted and the insights derived from them, ultimately contributing to the overall robustness and credibility of the thesis.

### 4.1 Design of the proposed method

The proposed methodology for beaconing detection encompasses a multifaceted approach designed to effectively identify and mitigate malicious beaconing activities within behavior detection frameworks. This strategy integrates a variety of advanced techniques and algorithms to bolster the system's detection capabilities. Among these techniques are sophisticated anomaly detection methods, and pattern recognition tools, all of which contribute to a robust framework for identifying suspicious activities. By leveraging these advanced technologies, the system is equipped to adapt and respond to new and evolving threats, ensuring that detection remains effective even as malicious actors continuously modify their tactics. A key component of this methodology is its emphasis on real-time detection and response. Continuous monitoring of

# BAYWATCH Algorithm Steps

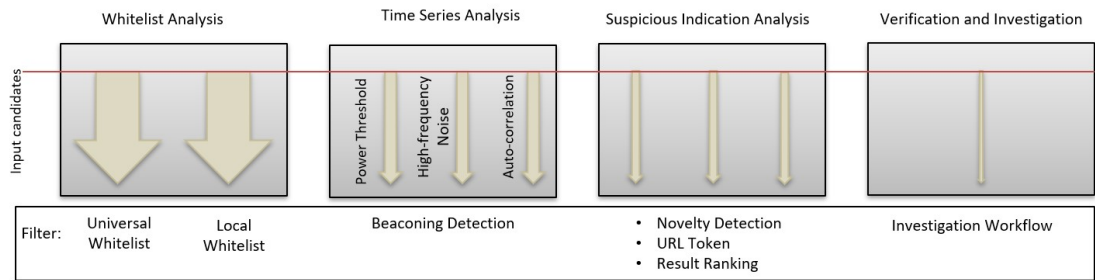


Figure 4.1: Algorithm steps

network traffic and behavior patterns enables the system to quickly identify and flag potential beaconing activities, allowing for rapid threat mitigation before significant harm can occur. This real-time capability is complemented by automated response mechanisms that swiftly neutralize detected threats, thus enhancing the overall security posture of the network. In addition to real-time capabilities, the methodology incorporates a layer of resilience against false positives and negatives. By refining detection algorithms and employing sophisticated filtering techniques, the system aims to minimize incorrect detections that could lead to unnecessary alerts or overlooked threats. This balance is key for maintaining both the efficiency and reliability of the detection system, ensuring that resources are focused on genuine threats. Furthermore, the methodology integrates advanced analytics and continuous learning processes, which are pivotal for maintaining and enhancing detection accuracy over time. By leveraging data analytics and feedback loops, the system can learn from past detections and iteratively improve its performance. This continuous learning process ensures that the detection capabilities are consistently refined and enhanced, keeping pace with the dynamic and ever-evolving nature of cyber threats. Overall, this robust and adaptive methodology significantly strengthens network defenses against beaconing attacks. Adopting a comprehensive and multifaceted approach, enhances both the detection and mitigation processes, providing a resilient and robust defense mechanism against sophisticated and evolving threats. This strategy is poised to play a critical role in safeguarding network security, ensuring the integrity and reliability of the system in the face of malicious beaconing activities.

Figure ?? provides a detailed overview of the algorithm's processing steps, which occur in four distinct phases. In Phase 1, the input data undergoes whitelist analysis, where it is categorized into two separate whitelists. The Universal Whitelist contains common, globally trusted URLs such as major search engines (e.g., Google, Yahoo) and other widely recognized platforms. The Local Whitelist, on the other hand, includes URLs that are specifically trusted within the organization, such as internal Allianz resolution URLs. This step helps to filter out trusted sources, ensuring that only potentially suspicious or unknown URLs are subjected to further analysis in subsequent phases.

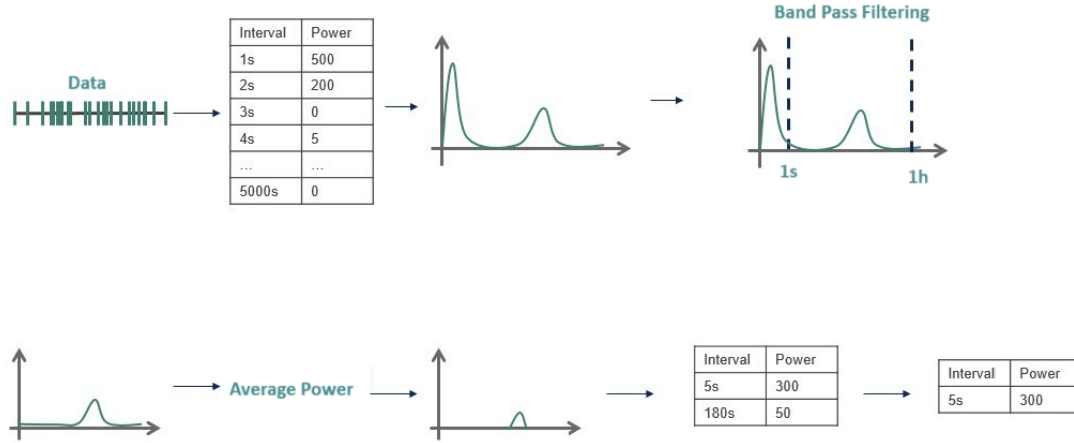


Figure 4.2: Steps of the proposed method

Phase 2 focuses on time series analysis, where the algorithm processes the data to detect beaconing activity. Beaconing refers to the repeated communication of data to external servers, which can indicate malicious activity or unauthorized data exfiltration.

In Phase 3, the Suspicious Indication Analysis takes place. This phase is composed of several sub-processes aimed at identifying and ranking suspicious URLs. It includes Novelty Detection, which focuses on recognizing previously unseen or unusual patterns in the data; URL Token analysis, which breaks down and examines specific elements of URLs for signs of malicious intent; and Result Ranking, where URLs are ranked based on their likelihood of being malicious, helping to prioritize further investigation. This step refines the list of suspicious indicators to ensure that only the most relevant ones are brought forward for verification.

Finally, in Phase 4, the algorithm enters the Verification and Investigation phase. This is the concluding step where the flagged URLs and potential threats are thoroughly investigated and verified. This phase ensures that any suspicious activities are properly validated, confirming whether they are legitimate threats or false alarms. The outcome of this phase directly informs decision-making processes regarding the necessary actions to mitigate or resolve any identified risks.

Figure ?? visually represents the methodology for beaconing detection as proposed in the master thesis. The process begins with the collection of data, a first step that will be elaborated upon in detail later in the thesis. Following data collection, the methodology involves exact data cleaning and processing to ensure the accuracy and quality of the dataset. This stage addresses any inconsistencies or errors in the data, preparing it for more sophisticated analysis.

To enhance security and simplify data management for large organizations with diverse URL hostnames, a whitelist is implemented. This whitelist restricts user activity to domains containing "Allianz resolution." By comparing this whitelist against all user data, entries associated with whitelisted domains are removed. This focused approach significantly reduces the volume of data to be processed, which is given that the dataset exceeds 500,000 entries per day.

## 4 Methodology

URLs included in the whitelist are deemed non-malicious and therefore do not require further behavior checks, streamlining the analysis.

Subsequently, the methodology calculates the time intervals for each domain and their occurrences within these intervals. This step is essential for identifying patterns and trends in beaconing activities, providing insight into the frequency and timing of these activities.

The next phase involves bandpass filtering to eliminate noise, retaining only the data within the time range of 1 second to 1 hour for further analysis. This filtering step focuses on relevant signals while minimizing interference from irrelevant data, ensuring that the analysis is both efficient and accurate.

Following filtering, the methodology includes the calculation of average power for each domain and subsequent normalization by adjusting all powers accordingly. In this context, the "power" metric indicates how frequently a particular website is visited within a given day. This metric relies on the assumption that each access to the website represents a distinct user interaction, with multiple accesses from the same user counted separately. The accuracy of the "power" measure depends on the consistency and reliability of the data collection methods used to track website visits. Domains exhibiting a negative decrease in power are disregarded, as they do not conform to expected patterns and are unlikely to be indicative of malicious activity.

Finally, the analysis phase involves a thorough examination of the data over time. Significant peaks observed during this analysis are indicative of potential malicious beaconing activity, marking the culmination of the beaconing detection process. This comprehensive methodology ensures that the detection system is robust, accurate, and capable of adapting to evolving threats, thereby enhancing the overall security and integrity of the network.

### 4.2 Data Extraction and Preparation

The dataset documents the activities of users as they navigate through different URLs during each workday, encompassing a variety of information such as the URLs visited, the date and time of each visit, and potentially other relevant details regarding user behavior or system interactions. This comprehensive collection of data provides a detailed view of user activities and interactions, allowing for an in-depth analysis of browsing patterns and behaviors. Organized within a JSON file, the dataset facilitates efficient storage and retrieval of data, thanks to JSON's flexibility and readability, which make it easier to manage and manipulate large volumes of information. Each entry logs a specific user interaction, including the precise time and date, allowing for a chronological reconstruction of user activities essential for identifying patterns and trends over time, such as peak usage periods or frequent transitions between specific URLs. The dataset may also include other relevant details that provide further context to user behavior, such as system interactions like login times or error messages, offering additional insights into the user experience and system performance. Overall, the dataset serves as a foundational resource for analyzing user behavior, enabling the identification of significant patterns and trends, and supporting efficient data processing and analysis, which is key for developing effective strategies for beaconing detection and enhancing overall network security.

Figure ?? displays a visual representation of the JSON file, providing a comprehensive overview of the specific user's browsing activity.

```

{"logdate": "2023-08-01T00:01:54.000Z", "url_hostname": "account.nonprod.allyz.com", "user": "-"}
{"logdate": "2023-08-01T00:01:54.000Z", "url_hostname": "account.nonprod.allyz.com", "user": "-"}
{"logdate": "2023-08-01T00:02:06.000Z", "url_hostname": "infra-api.eu.newrelic.com", "user": "-"}
{"logdate": "2023-08-01T00:03:16.000Z", "url_hostname": "infra-api.eu.newrelic.com", "user": "-"}
{"logdate": "2023-08-01T00:03:54.000Z", "url_hostname": "account.nonprod.allyz.com", "user": "-"}
{"logdate": "2023-08-01T00:03:54.000Z", "url_hostname": "account.nonprod.allyz.com", "user": "-"}
{"logdate": "2023-08-01T00:05:54.000Z", "url_hostname": "account.nonprod.allyz.com", "user": "-"}
{"logdate": "2023-08-01T00:05:54.000Z", "url_hostname": "account.nonprod.allyz.com", "user": "-"}
{"logdate": "2023-08-01T00:07:55.000Z", "url_hostname": "account.nonprod.allyz.com", "user": "-"}
{"logdate": "2023-08-01T00:07:55.000Z", "url_hostname": "account.nonprod.allyz.com", "user": "-"}
{"logdate": "2023-08-01T00:08:20.000Z", "url_hostname": "infra-api.eu.newrelic.com", "user": "-"}
{"logdate": "2023-08-01T00:08:25.000Z", "url_hostname": "infra-api.eu.newrelic.com", "user": "-"}
{"logdate": "2023-08-01T00:08:30.000Z", "url_hostname": "infra-api.eu.newrelic.com", "user": "-"}
{"logdate": "2023-08-01T00:08:31.000Z", "url_hostname": "infra-api.eu.newrelic.com", "user": "-"}
{"logdate": "2023-08-01T00:08:35.000Z", "url_hostname": "infra-api.eu.newrelic.com", "user": "-"}
{"logdate": "2023-08-01T00:08:40.000Z", "url_hostname": "infra-api.eu.newrelic.com", "user": "-"}
{"logdate": "2023-08-01T00:08:45.000Z", "url_hostname": "infra-api.eu.newrelic.com", "user": "-"}
{"logdate": "2023-08-01T00:08:50.000Z", "url_hostname": "infra-api.eu.newrelic.com", "user": "-"}
{"logdate": "2023-08-01T00:08:51.000Z", "url_hostname": "infra-api.eu.newrelic.com", "user": "-"}
{"logdate": "2023-08-01T00:08:55.000Z", "url_hostname": "infra-api.eu.newrelic.com", "user": "-"}

```

Figure 4.3: Steps of the proposed method

Each JSON file acts as a comprehensive record, including important information such as "logdate" (date and time) and "url\_hostname". The company prioritizes security; usernames are deliberately omitted during the import process for added protection. The following section outlines the Document Type Definition (DTD) for the JSON files.

```

1 {
2   "$schema": "http://json-schema.org/draft-07/schema#",
3   "type": "object",
4   "properties": {
5     "logdate": {
6       "type": "string",
7       "format": "date-time"
8     },
9     "urlhostname": {
10      "type": "string"
11    },
12    "user": {
13      "type": "string"
14    }
15  },
16  "required": ["logdate", "urlhostname"]
17 }

```

The provided DTD serves as a specification for the structure and constraints of the dataset entries. It defines the expected format and mandatory fields for each log entry. Specifically:

- "logdate": Specifies the date and time format for the log entry.
- "url\_hostname": Identifies the hostname of the accessed URLs.
- "user": Optional field denoting the user identifier.

This thesis proposes a sophisticated system for managing website connection data, designed to handle and analyze extensive logs of IP address connections to various domains. The system begins by utilizing InfluxDB, a highly specialized database optimized for managing time-series data. InfluxDB's architecture is particularly well-suited for this application because it is engineered to efficiently handle high volumes of data with temporal components, such as timestamps associated with user interactions.

The methodology for managing the data involves importing the dataset into InfluxDB, starting with a strategic focus on a single day's worth of data. This approach allows for an initial, manageable dataset to be processed, which is key for validating the system's functionality and performance before scaling up to larger volumes of data. The dataset itself is composed of JSON files, each containing detailed logs of connections made from various IP addresses to specific domains. These logs include timestamps, IP addresses, and domain names, forming a comprehensive record of user activity.

The success of this methodology relies on establishing a well-structured data environment within InfluxDB. To achieve this, a predefined schema is implemented, which dictates how the data is organized and stored within the database. This schema is designed to ensure data integrity and consistency by enforcing a uniform set of rules across all entries. Consistency in data structure is important as it facilitates smoother data processing and analysis, reducing the likelihood of errors and discrepancies.

The implementation of this schema supports reliable data management by ensuring that each piece of information adheres to the same format and standards. This uniformity is important for maintaining the quality of the data, which in turn impacts the reliability of subsequent analyses and research findings. Clean and reliable data is the cornerstone of trustworthy and effective research, and thus, establishing a well-defined schema is another step in the proposed method. By prioritizing data integrity and consistency, the system lays a solid foundation for accurate and insightful analysis, ultimately contributing to the overall success of the proposed research methodology.

After establishing a well-structured data environment, the next step involves importing the data itself. This process follows a defined sequence, facilitated by custom Python scripts. These scripts automate the creation of a dedicated "bucket" within InfluxDB.

This method establishes a solid foundation for in-depth analysis by transforming raw, unstructured data into a well-organized format that is highly conducive to detailed examination. The strategic decision to import data for a specific day allows for a focused analysis of temporal patterns and variations, which are essential for uncovering trends and anomalies within a defined timeframe. This approach simplifies the analysis, making the data more manageable and representative of specific time-based behaviors. The JSON file structure, with its predefined key criteria and integrated security measures. It provides a clear and consistent framework for storing and accessing data, ensuring that each piece of information adheres to the same standards and is safeguarded against unauthorized access. This structured format supports efficient data processing and retrieval, which is vital for conducting thorough and accurate analyses of network interactions. By utilizing this organized data structure, the methodology enables a comprehensive exploration of user behavior, connection patterns, and potential security threats. This detailed examination is essential for identifying vulnerabilities, detecting suspicious activities, and enhancing overall network security. The systematic approach not

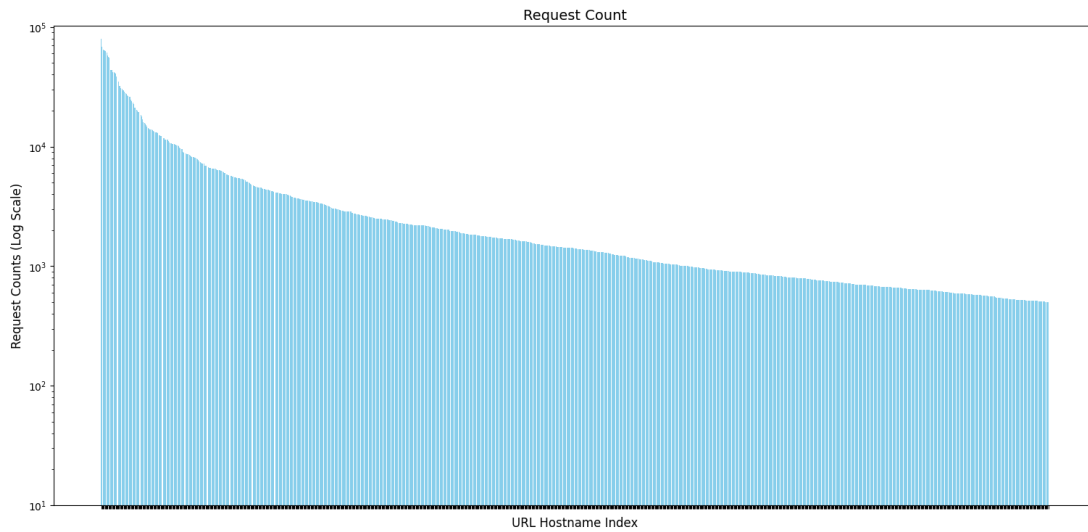


Figure 4.4: Request counts of URLs (log scale)

only facilitates a deeper understanding of the dataset but also sets the stage for generating actionable insights and implementing effective security measures.

The data is collected over exactly one day, which represents a typical working day on Tuesday. The total volume of data generated during this single day amounts to almost 73 gigabytes. To gain meaningful insights from this data, it is crucial to understand its behavior. Therefore, as an initial step, the data's behavior was thoroughly examined. This analysis was conducted in several stages: By observing the overall data behavior within one day, identifying which data sets were most frequently accessed or visited during the day, and analyzing the time intervals between each request, this approach enables a deeper understanding of usage patterns and helps in identifying any anomalies or trends that may be present in the data.

Figure ?? provides a visual representation of the request counts for different URLs within the dataset. The logarithmic scale on the Y-axis allows for a clearer comparison of the visit frequencies across URLs with varying levels of activity. This visualization highlights the distribution of request counts, showcasing the range of visit frequencies observed within the dataset. By examining this distribution, it is possible to identify URLs with high visit counts, which may indicate critical resources or frequently accessed services. Conversely, URLs with lower visit counts may represent less frequently accessed or less critical components of the network. This analysis provides valuable insights into user behavior and resource utilization, enabling organizations to optimize their network infrastructure and prioritize security measures effectively.

Figure ?? provides a linear scale representation of the request counts for different URLs within the dataset. This visualization offers a more detailed view of the visit frequencies across URLs, highlighting the distribution of request counts with greater granularity. By examining this distribution, it is possible to identify URLs with varying levels of activity, ranging from high-visit counts to low-visit counts. This analysis enables organizations to gain insights into user behavior and resource utilization, facilitating informed decision-making and strategic

## 4 Methodology

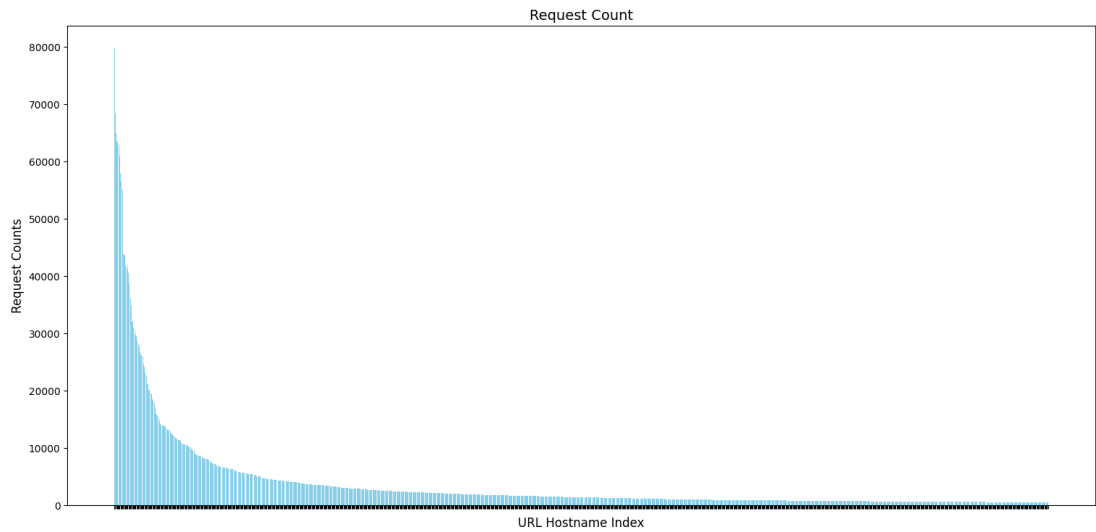


Figure 4.5: Request counts of URLs (linear scale)

planning.

Figure ?? illustrates the number of visits to different URLs over a 24-hour period. The x-axis represents the hours of the day, while the y-axis indicates the number of visits to each URL. This visualization provides a clear overview of the distribution of visits throughout the day, highlighting peak usage times and periods of lower activity. By examining this data, it is possible to identify trends and patterns in user behavior, which can be instrumental in detecting anomalies or suspicious activities. This analysis serves as a foundational step in understanding the dataset's behavior and establishing a baseline for further investigations. As shown, the distribution of visits predominantly falls within the range of 0–500, which is significantly higher compared to the range of 500–3,500.

From the figure, it is evident that some URLs exhibit high activity levels initially but experience a steep decline, with their visit counts approaching zero around 04:00. Based on this observation, the URL activity was categorized into two distinct periods: day activity and night activity, each represented by separate charts for better analysis.

Figure ?? illustrates the distribution of time intervals between requests for different URLs within the dataset. The logarithmic scale on the Y-axis allows for a clearer comparison of the time intervals across URLs with varying patterns of activity. The X-axis demonstrates the bins, which are divided into 90 bins. These bins are structured as follows: from 0 to 60 seconds, each second has its own bin; from 1 to 30 minutes, each minute has its own bin. The calculation within this period is such that if the bin is 1 minute, the interval is  $\pm 30$  seconds, meaning it calculates from 30 seconds to 90 seconds. This approach helps ensure that the analysis does not miss any potential malicious behavior within the specified time limits. This visualization highlights the variability in time intervals between requests, showcasing the range of durations observed within the dataset. By examining this distribution, it is possible to identify URLs with distinct time interval patterns, which may indicate specific usage behaviors or in-



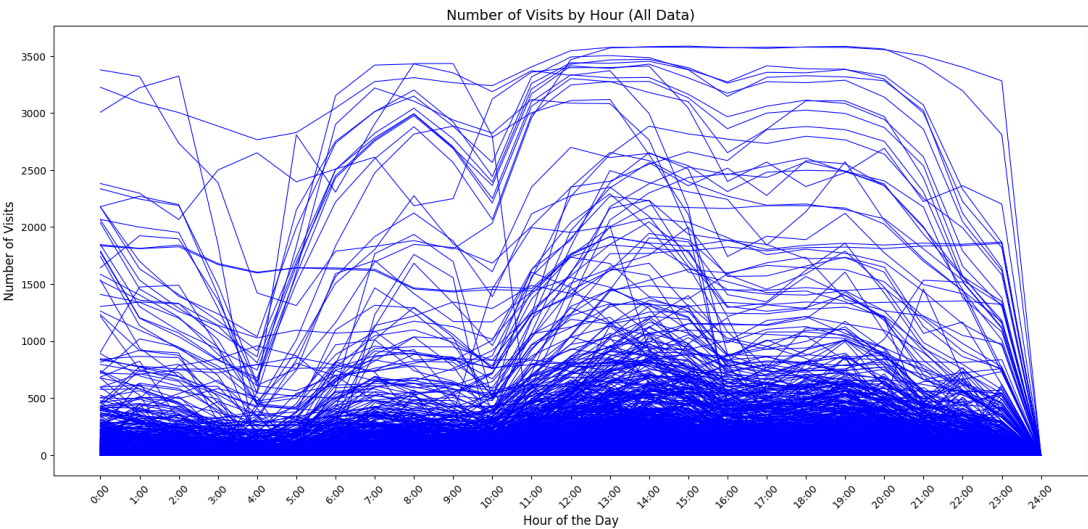


Figure 4.6: Number of visit by hour (24 hours)

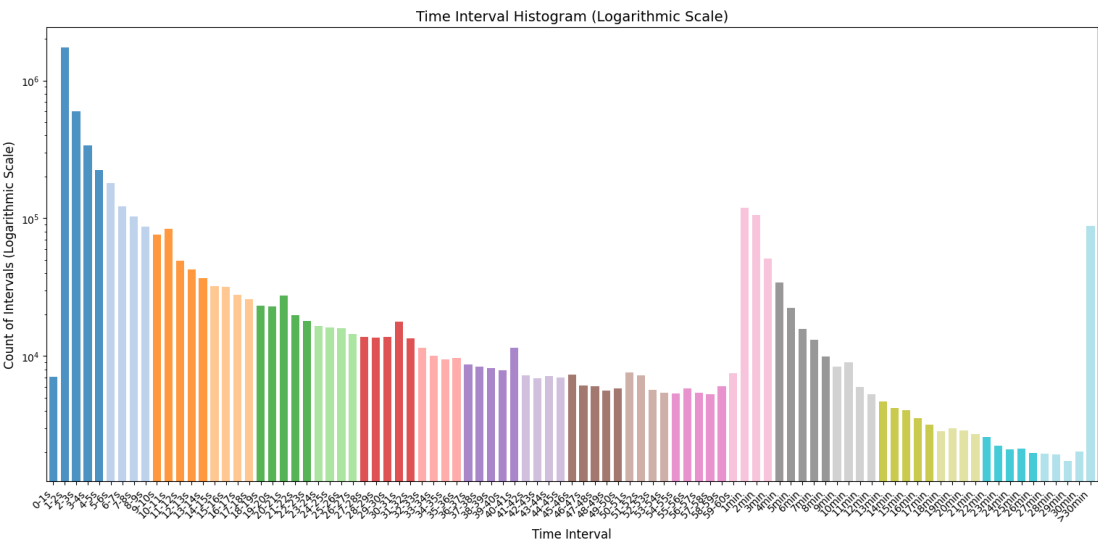


Figure 4.7: Time interval (log scale)

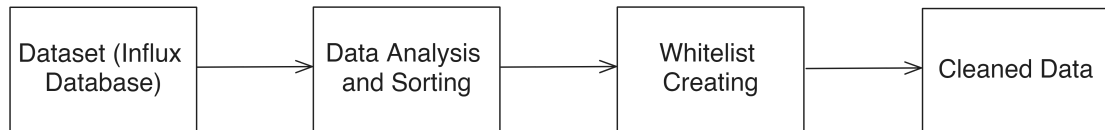


Figure 4.8: Dataset

teraction trends. This analysis provides valuable insights into the frequency and timing of user interactions, enabling organizations to optimize their network resources and enhance security measures effectively.

### 4.3 Data Preprocessing

The initial step in the data cleaning process involves separating all URL hostnames from one another. Once these hostnames are isolated, they are systematically sorted by date. This sorting step serves several important purposes. Firstly, it organizes the data chronologically, which facilitates the identification of trends or patterns that emerge over time. For instance, if there is a need to investigate a specific security incident that occurred on a certain day, sorting the data by date allows for a more focused and efficient search, thereby reducing the time and effort required to locate the relevant information. Secondly, sorting by date prepares the data for subsequent stages in the data management workflow. Many data analysis techniques depend on the data being arranged in a specific sequence, and organizing the data chronologically ensures that it is ready for these advanced analytical processes. This stage of the cleaning process effectively transforms raw data into a structured and coherent format, which is necessary for performing in-depth analyses of network interactions and identifying potential security threats. Additionally, this preprocessing step includes the creation of a whitelist from all URL hostnames. Since the company frequently accesses a variety of trusted URLs multiple times throughout the day, establishing a whitelist helps to streamline the algorithm's operations. By compiling a list of these consistently trusted URLs, the algorithm's efficiency is enhanced, allowing it to operate more quickly and effectively. This improved efficiency supports the algorithm's ability to detect potentially suspicious activities within network interactions more accurately. Through this cleaning process, raw data is organized into a format that is both structured and easily analyzable, setting the stage for comprehensive insights into network behaviors and security risks.

In the figure ?? the various steps undertaken to process the data are illustrated, beginning with the initial stages of data collection and extending through to the final preparation required before the algorithmic process can commence. This visual representation outlines how the raw data is first gathered and then cleaned to ensure accuracy and consistency. The process includes several key stages, Each step is designed to transform the raw, unprocessed data into a well-organized dataset that is ready for detailed algorithmic examination.

## 4.4 Time Interval Analysis

The concept of a "time interval" in this context pertains to the duration between occurrences of a specific URL hostname within a given day. This analysis focuses on the time elapsed between visits to each unique website (URL hostname) during a single day. Visualize this as tracking the gaps between entries in a log for a particular website; each visit to the site is recorded as a new entry. By examining these time intervals, the method aims to decipher how frequently and consistently users access each website throughout the day. This approach effectively captures the "rhythm" of website activity, revealing patterns such as peak usage times and periods of lower activity.

Calculating these time intervals produces a numerical value that represents the time gaps between visits to the same website. This value serves as a foundational metric for understanding typical website usage patterns. By focusing on daily data, the method ensures that the time intervals reflect a representative snapshot of user behavior, allowing for a nuanced exploration of how web traffic fluctuates throughout the day. This in-depth analysis helps to identify the typical patterns of website access, creating a baseline for what is considered normal activity.

This focus on time intervals is key for setting a robust baseline of regular website traffic. Understanding these regular patterns establishes a benchmark against which unusual or atypical activities can be measured. For instance, if a website that typically has long intervals between visits suddenly experiences a surge in frequent accesses, this deviation from the established norm may indicate suspicious behavior or potential security threats. Therefore, the analysis of time intervals facilitates the identification of normal traffic patterns and enhances the ability to detect anomalies effectively.

Moreover, analyzing time intervals provides a framework for differentiating between routine user behavior and potential malicious activities. By establishing clear patterns of typical website usage, the methodology can more accurately pinpoint deviations that may warrant further investigation. This thorough examination lays the groundwork for subsequent analytical steps, where patterns that deviate from the norm can be scrutinized for signs of anomalous or harmful activities. Ultimately, this focus on time intervals strengthens the overall detection process, ensuring that the system can distinguish between expected and unexpected behavior with greater precision, leading to more reliable and actionable insights into network security.

Figure ?? is a series of histograms depicting the distribution of time intervals between successive network requests for different URLs within a specified timeframe. Each histogram represents a unique URL, with the x-axis consistently ranging from 0 to 400 seconds. This range captures the variability in time intervals between requests.

The histograms are constructed using data that records the duration between consecutive requests. Each bar in the histogram illustrates the frequency, or "power," (that refers to the frequency of network requests that occur within specific time interval bins) of requests that fall within specific time interval bins. This visualization helps to understand how often requests occur within different time gaps for each URL.

For each URL, the histogram reveals the frequency of requests within various time intervals. Taller bars indicate higher request frequencies within those intervals, while shorter bars suggest less frequent requests. The uniform x-axis range across all plots enables straightforward comparison between different URLs, highlighting differences in request timing patterns.

## 4 Methodology

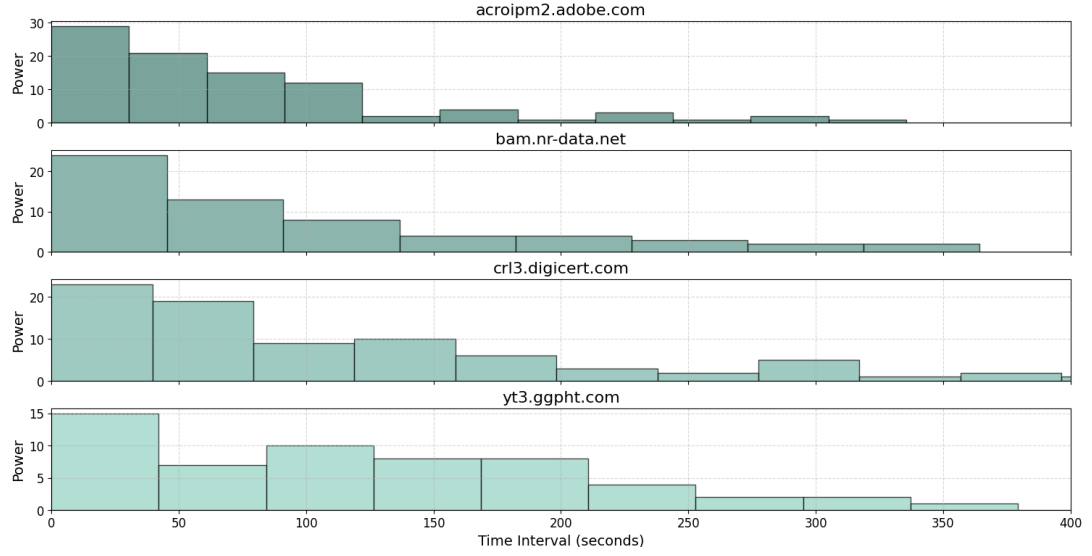


Figure 4.9: Time Intervals

URLs with concentrated request bursts will show taller bars in certain intervals, reflecting periods of higher request activity. Conversely, URLs with more sporadic or irregular request patterns will exhibit shorter bars, indicating lower or more inconsistent request frequencies. By analyzing these histograms, one can discern patterns such as periodic bursts, irregular intervals, or consistent frequencies. These insights can be indicative of the operational behavior, performance, and load of the respective URLs.

Overall, the histograms provide a visual summary of how request timings are distributed over the observed period, facilitating an understanding of request dynamics and potentially revealing insights into the performance and usage patterns of the monitored web services.

### 4.5 Data Enhancement

Once the "power" for all URLs in the dataset is calculated, representing the frequency of visits to each unique website, the next step involves computing the average power. The "power" metric serves as a quantitative measure of how often each website is accessed within a given timeframe, providing valuable insight into user behavior patterns. The average power acts as a reference point or baseline against which the individual powers are compared, allowing for the identification of significant deviations from typical visit frequencies. To determine the average power, the total power across all URLs is summed and then divided by the number of URLs in the dataset. This average power serves as a benchmark, providing a context for evaluating the frequency of visits to each specific URL. By establishing this baseline, the methodology can differentiate between normal and abnormal activity levels, thereby facilitating the identification of URLs that exhibit unusual patterns of access. After determining the average power, each calculated power is assessed relative to this baseline. The evaluation process involves comparing the power of each URL to the average power to identify significant deviations. Specifically,

the power of each URL is subtracted from the average power. If the resulting value is negative, indicating that the URL's visit frequency is below the baseline, it is omitted from further analysis. This step ensures that the focus remains on URLs with visit frequencies that significantly exceed the norm, which are more likely to represent meaningful patterns or anomalies. The rationale behind omitting negative deviations is based on the premise that these values do not provide meaningful insights into unusual behavior or potential security threats. By filtering out these less significant data points, the methodology enhances the quality and relevance of the dataset. This focused approach allows for a more efficient examination of the data, concentrating on positive deviations that indicate higher-than-average visit frequencies. Focusing on significant deviations from the average power refines the dataset, making it more manageable and pertinent for further analysis. This step not only improves the efficiency of the data processing but also enhances the ability to detect anomalies that could signify security threats or other irregularities. By concentrating on URLs with visit frequencies that stand out from the baseline, the methodology increases the likelihood of identifying genuinely noteworthy patterns. In summary, the calculation of average power and the subsequent evaluation of individual powers against this baseline are critical components of the data enhancement process. By omitting powers that result in negative values, the methodology ensures that the dataset is refined to include only significant deviations. This targeted focus on relevant patterns and anomalies lays the groundwork for a more detailed and accurate analysis of network interactions and potential threats, ultimately contributing to a more robust and reliable security framework.

## 4.6 Band-Pass Filtering

In network processing, bandpass filtering is a technique employed to dissect time-series data, allowing the extraction of specific frequency components within a predefined range. This technique is particularly useful in analyzing patterns in HTTP requests. Bandpass filtering involves the application of a filter that selectively passes signals whose frequencies fall within a certain range, known as the "bandpass" range. By isolating these specific frequencies, the technique enables a focused examination of data that is most relevant to the analysis, effectively filtering out noise and irrelevant information. This selective process enhances the clarity and precision of the data, making it easier to identify significant patterns and trends in HTTP requests. For instance, in a dataset containing web traffic data, bandpass filtering can help highlight the intervals and frequencies at which certain URLs are accessed, providing insights into user behavior and potential security threats. The ability to concentrate on a specific frequency range allows analysts to zero in on the most pertinent signals, thereby improving the accuracy and effectiveness of the analysis.

Furthermore, bandpass filtering aids in detecting anomalies and irregularities within the network. By focusing on the relevant frequency components, it becomes easier to spot deviations from the norm, which could indicate unusual or suspicious activity. This method is instrumental in the context of network security, where identifying and understanding these anomalies is key for protecting against potential threats. In addition to its application in security, bandpass filtering is also valuable for optimizing network performance. By understanding

the regular patterns of data flow and identifying any irregular spikes or drops, network administrators can make informed decisions to enhance the efficiency and reliability of the network. This comprehensive approach ensures that only the most significant data is analyzed, leading to more accurate and actionable insights. Overall, bandpass filtering is a powerful technique in-network processing, enabling the extraction of meaningful information from large datasets. By focusing on specific frequency components, it facilitates a detailed and precise analysis of network interactions, helping to uncover important patterns and trends. This technique not only improves the understanding of user behavior and network performance but also plays a vital role in enhancing security by detecting potential threats and anomalies.

The bandpass filter formula can be expressed as:

$$H(\omega) = \frac{1}{1 + \frac{j(\omega - \omega_{\text{low}})}{\omega_c}} \cdot \frac{1}{1 + \frac{j(\omega_{\text{high}} - \omega)}{\omega_c}}$$

Where:

- $H(\omega)$  is the frequency response of the bandpass filter,
- $\omega$  is the angular frequency,
- $\omega_{\text{low}}$  is the low cut-off frequency,
- $\omega_{\text{high}}$  is the high cut-off frequency,
- $\omega_c$  is the critical frequency.

The bandpass filter selectively passes frequencies between the low cut-off frequency ( $\omega_{\text{low}}$ ) and the high cut-off frequency ( $\omega_{\text{high}}$ ), while attenuating frequencies outside this range. This formula provides a mathematical representation of how the bandpass filter operates to isolate specific frequency components within the defined range.

### 4.7 Evaluation Criteria

The Python-implemented data evaluation process reveals instances of beaconing behavior within the dataset, providing valuable insights for experts to identify potential malicious activity. This task extends beyond simply visualizing the algorithm's output; it relies heavily on the expertise of professionals who navigate vast amounts of data to detect subtle indicators of malicious behavior. The evaluation involves an examination of user behavior patterns to identify any anomalies or suspicious activities that suggest beaconing. Beaconing, a technique used by malicious actors, involves repetitive signal transmissions that allow compromised systems to communicate with external servers. Identifying such behavior requires sophisticated analysis techniques and a deep understanding of network traffic patterns.

Leveraging Python's powerful data analysis and processing capabilities, the evaluation process begins with the systematic analysis of large volumes of network data. Python's libraries and tools enable the handling and manipulation of complex datasets, facilitating the detection of beaconing signals embedded within regular network traffic. The process involves applying

various algorithms and analytical methods to sift through the data, identifying patterns that deviate from normal user behavior. This initial algorithmic analysis provides a foundation, but the true strength of the evaluation lies in the subsequent expert review.

Experts play a critical role in this process, as they interpret the algorithmic findings within the broader context of network activity. They scrutinize the identified patterns, cross-referencing them with known threat indicators and leveraging their experience to assess the likelihood of malicious intent. This human expertise is essential for distinguishing between benign anomalies and genuine threats. Upon detection of suspicious behavior, experts are tasked with making informed decisions on how to address the implicated users and domains. This involves a risk assessment to determine the severity and potential impact of the detected activity.

Decisions on handling identified threats may include a range of actions, from monitoring the suspect activity more closely to implementing immediate mitigation measures such as blocking the suspicious domains or isolating affected systems. The evaluation process also involves documenting the findings and actions taken, ensuring a comprehensive record that can be used for future reference and continuous improvement of the detection system.

The integration of Python's technical capabilities with the nuanced understanding of skilled analysts results in a robust and dynamic approach to network security. This comprehensive approach not only enhances the accuracy of detecting beaconing behavior but also ensures that potential threats are thoroughly understood and effectively mitigated. By combining automated data processing with expert analysis, the methodology provides a reliable framework for maintaining network security and proactively addressing emerging threats. The continuous evaluation and refinement of this process are vital for staying ahead of increasingly sophisticated cyber threats, ultimately safeguarding the integrity and security of network environments.





## 5 Implementation

This chapter introduces the implementation of the proposed methodology within Allianz Company's network infrastructure, delving into the intricate process of adapting the system to integrate seamlessly with the company's extensive log data. It begins by exploring the necessary adjustments made to align the methodology with Allianz's specific log data formats and structures, highlighting the critical decisions in parameter selection and the strategic use of various analytical tools. The chapter aims to provide a comprehensive evaluation of the performance metrics derived from this implementation, offering a detailed analysis of the methodology's efficacy. Supported by visualizations such as graphs and charts, this analysis facilitates a clearer understanding of complex data and key findings.

Furthermore, the chapter rigorously assesses the methodology's effectiveness in detecting malicious behavior, providing an in-depth examination of detected anomalies, their correlation with potential security threats, and the system's responsiveness. This assessment underscores the practical value of the methodology, demonstrating its significant impact on enhancing network security. By presenting concrete evidence of the methodology's success in identifying and mitigating threats, the chapter establishes a foundation for discussing advanced security strategies.

The insights gained from this implementation are important for Allianz, as they pave the way for continuous improvement initiatives and the development of more robust security measures. This chapter sets the stage for broader discussions on enhancing network security, offering a clear pathway for future chapters to explore advanced techniques and strategies aimed at fortifying Allianz's network infrastructure against the ever-evolving landscape of cyber threats. Through this comprehensive examination, the chapter not only highlights the immediate benefits of the methodology but also its long-term potential to significantly bolster Allianz's cybersecurity framework.

### 5.1 Experimental Setup

This section details the adaptation process to integrate the methodology within Allianz Company's network infrastructure. Initially, adjustments were made to ensure compatibility with the company's log data, involving comprehensive data mapping and transformation to align with the methodology's requirements. This step was key to guarantee that the raw data could be accurately interpreted and utilized by the detection algorithms. Stringent measures were taken to address any discrepancies or inconsistencies encountered during the integration process. These measures included validating data integrity, standardizing log formats, and resolving any anomalies to ensure seamless integration.

For testing purposes, an experimental framework was established. This framework was designed to cover a wide range of scenarios, from routine network operations to sophisticated

simulated cyber-attacks. These scenarios were crafted to assess the methodology's performance under diverse conditions, providing a realistic and thorough evaluation. The scenarios mimicked real-world network behaviors, encompassing various types of user activities, network loads, and potential threat vectors. This comprehensive testing ensured that the methodology was robust and applicable in practical settings, capable of handling the dynamic nature of real-world network environments.

Additionally, real data sourced from Allianz Company was utilized to validate the methodology's efficacy under authentic operational conditions. This real-world validation was a critical component of the adaptation process, as it provided invaluable insights into the methodology's performance in a live environment. The use of genuine operational data bolstered the credibility and relevance of the methodology, demonstrating its practical utility in addressing real-world cybersecurity challenges. By evaluating the methodology against actual network traffic and user behavior, the team could identify and address any limitations, fine-tuning the system to enhance its effectiveness.

Throughout the testing phase, data collection was conducted rigorously, capturing a comprehensive array of network activities and events. This extensive data collection ensured a rich dataset for analysis, encompassing a wide variety of normal and abnormal behaviors. The collected data served as the foundation for subsequent analyses, enabling a thorough and detailed evaluation of the methodology's effectiveness in detecting and mitigating malicious behavior within Allianz Company's network infrastructure. The analysis focused on identifying patterns and anomalies indicative of malicious activity and assessing the accuracy and reliability of the detection algorithms.

The comprehensive approach to adaptation and testing detailed in this section underscores the methodology's readiness for real-world deployment. By ensuring data compatibility, rigorously testing under diverse scenarios, and validating with real-world data, the methodology is demonstrated to be not only theoretically sound but also practically effective. This robust process lays a solid foundation for enhancing Allianz's network security, providing a reliable tool to tackle the complex cybersecurity issues faced by the organization. The insights and results garnered from this extensive testing phase set the stage for further refinement and optimization, ensuring that the methodology remains effective against evolving cyber threats.

### 5.2 Whitelisting Mechanism for URL Filtering

In the heart of Allianz Company's expansive network infrastructure, a pivotal decision was made to bolster its security framework: the establishment of a robust URL whitelist. This action was driven by the need to strengthen monitoring and enhance the safety of the company's online activities. The idea was simple yet profound—by creating a safe space within the system where only trusted URLs would be allowed to flourish, potential risks could be minimized, and network security maximized.

The process of curating this whitelist involved a meticulous selection of URLs. These were determined by several criteria, each designed to ensure that only the most legitimate and useful links were included. URLs that employees visited regularly, those associated with company resolutions, and other trusted websites made it onto the list. On the other hand, URLs that did

not meet these predefined conditions were excluded from the whitelist. These exclusionary decisions were not arbitrary; instead, they stemmed from a deep understanding of what constituted a potential threat to the network. Suspicious IP addresses, known malicious domains, and unauthorized access points all triggered exclusion, thereby preserving the integrity of the company's digital infrastructure.

The function at the core of this process was designed to filter and process URLs with precision. It carefully examined each one against the exclusion criteria and sifted out those that posed a threat. What remained was a curated list of URLs that were deemed safe and, more importantly, relevant. This refined subset of URLs, free from the noise of irrelevant or dangerous data, allowed for more focused analysis, enabling security teams to zoom in on genuine threats. It also made the data easier to interpret, fostering clearer and more actionable insights.

By ensuring that only safe URLs entered the system, the whitelist function served as a key tool in the network's defense. It reduced the amount of data to be analyzed, cutting through the clutter and allowing for faster and more accurate detection of potential security breaches. This streamlined approach, which prioritized clarity and relevance, empowered analysts to identify anomalies in the network more effectively, making it easier to pinpoint suspicious activity and prevent breaches before they escalated.

As the team at Allianz worked tirelessly to perfect this methodology, it became clear that the whitelist was more than just a protective measure—it was a vital cog in the larger machine of network security. Its careful design and implementation underscored a strategic approach to safeguarding digital assets, ensuring that every step taken was one toward a more secure and resilient system. The precision with which the whitelist function was crafted, and the clarity it brought to network analysis, was a testament to the team's commitment to protecting the company's online environment. Through this careful curation of data, the organization could focus on what mattered most—securing the network while minimizing the risk of potential cyber threats.

## 5.3 Average Power Calculation

The process of calculating the power of requests is a critical component of analyzing network activity and discerning meaningful patterns within large datasets. This methodology unfolds as a sequential progression, beginning with the preliminary task of filtering URLs based on a predefined whitelist. Once this filtration is complete, the focus shifts to the intricate process of determining the power associated with each URL.

At the heart of this approach lies the notion of request power, a concept that quantitatively captures the frequency dynamics of network interactions. Specifically, this metric is derived by analyzing the temporal intervals between successive requests made to the same URL hostname. Each interval represents the duration elapsed between two consecutive requests, effectively capturing the rhythm and regularity of access patterns. By measuring these intervals across the dataset, the power of each URL is computed, providing valuable insights into the underlying behavioral trends.

The process begins with the creation of a dictionary, often referred to as the power dictionary, which serves as the repository for storing these calculated values. For every request

encountered in the dataset, the corresponding time interval is computed by subtracting the timestamp of the last occurrence from that of the current request. These intervals, measured in seconds, form the basis for assessing the frequency of access. Each time interval is then mapped to its occurrence count within the dictionary, where the count represents the number of times a specific interval has been observed. As this iterative process unfolds, the dictionary gradually accumulates a comprehensive record of interval frequencies, encapsulating the temporal dynamics of the dataset.

Upon completion of this calculation phase, the next step involves computing the average power across all URLs. This average serves as a benchmark against which individual URL powers are evaluated. The normalization process entails subtracting this average from the power values of each URL. This critical step ensures that the analysis focuses on relative deviations rather than absolute values, thereby highlighting URLs that exhibit unusual activity. Notably, URLs with normalized power values that fall below zero are deemed indicative of non-malicious behavior and are excluded from further analysis. Conversely, those with positive values proceed to subsequent stages of scrutiny, marking them as potential candidates for deeper investigation.

This analytical framework offers a robust mechanism for distinguishing normal network behavior from anomalies. By systematically identifying URLs with significant deviations in access frequency, the methodology enhances the detection of patterns that may signal malicious intent. The exclusion of URLs with negative power values serves to streamline the analysis, enabling a sharper focus on high-priority cases. Moreover, the iterative nature of this calculation process facilitates continuous refinement, allowing the methodology to adapt dynamically to the evolving landscape of network activity.

Beyond its technical utility, the calculation of request power provides profound insights into the behavioral dynamics of users and systems. By revealing the cadence of interactions and the distribution of access intervals, it paints a detailed picture of network usage patterns. These insights are invaluable not only for identifying potential security threats but also for understanding the broader context of network operations. The power dictionary, as the tangible output of this process, serves as a foundational tool for exploring these patterns. Its structured representation of time intervals and their corresponding power values offers a precise lens through which the intricacies of network activity can be examined.

In essence, the request power calculation methodology exemplifies the fusion of quantitative rigor and analytical depth. It transforms raw data into actionable intelligence, equipping analysts with the tools needed to navigate the complexities of modern network environments. Through its emphasis on precision, scalability, and adaptability, this approach underscores its pivotal role in fortifying network security and advancing the frontier of behavioral analytics.

### 5.4 Band-Pass Filtering

Bandpass filtering is an advanced signal processing technique used to refine time-series data by isolating specific frequency components within a defined range. The method operates by allowing only those components of a signal whose frequencies lie within a certain interval to pass through, while suppressing or attenuating those outside this range. This selective filter-

ing approach is instrumental in reducing noise, enhancing clarity, and extracting meaningful patterns from complex datasets. In the context of network traffic analysis, this technique is particularly valuable for identifying periodic behaviors or anomalies that occur within a specific frequency spectrum.

The process begins by setting lower and upper frequency boundaries, defined in seconds, to determine the target frequency range. These boundaries are normalized using the Nyquist frequency, which is half the sampling rate of the data, ensuring that the filtering criteria align with the temporal resolution of the dataset. Validation checks are performed to ensure that the normalized thresholds fall within an acceptable range, thereby avoiding computational errors. The Butterworth filter, known for its smooth frequency response and minimal distortions, is employed for this purpose. Unlike other filters, the Butterworth design maintains a balanced trade-off between precision and computational efficiency, making it well-suited for processing large or sensitive datasets.

To ensure accuracy and minimize phase distortions, the filtering process applies a forward and backward pass on the data, effectively refining the signal. This dual-pass approach produces a dataset containing only the frequency components that meet the specified criteria. For network traffic analysis, the bandpass filter can, for instance, evaluate the time intervals associated with URLs. By retaining only those URLs with temporal patterns falling within the target frequency range, the filter ensures that the analysis focuses on the most relevant components.

The practical implementation in your research involves defining specific lowcut and highcut frequencies, such as 1 second and 1 hour, respectively. This range captures patterns of interest while excluding noise and irrelevant fluctuations. The filtering process not only reduces the dataset's complexity and volume but also amplifies the significance of the retained information. By systematically excluding URLs with unimportant temporal dynamics, the technique supports a more focused and effective analysis of network behaviors.

This methodology has proven critical for cybersecurity applications, where detecting subtle variations in traffic patterns can reveal potential threats or anomalies. For example, identifying periodic spikes in requests to specific URLs within a defined frequency band can indicate malicious activity or abnormal network behavior. The refined dataset resulting from bandpass filtering forms a robust foundation for further analysis, enabling researchers to derive accurate, actionable insights.

In addition to improving analytical precision, the computational efficiency of the bandpass filtering process makes it suitable for processing datasets of varying sizes. While the method is efficient for moderately sized datasets, optimizations such as parallel processing or alternative algorithms can further enhance performance for very large datasets. Overall, this technique plays a pivotal role in the comprehensive study of network traffic dynamics, contributing to a deeper understanding of meaningful patterns and supporting the overarching goals of the research.

## 5.5 Function to Calculate Autocorrelation

The `calculate_autocorrelation` function is used to compute the autocorrelation of a time series of power values. Autocorrelation is a statistical method that measures the simi-

larity between a signal and a lagged version of itself over successive time intervals. It is particularly useful in identifying patterns or periodicity within the data, such as repeated cycles or trends over time. The function utilizes the `acf` (Autocorrelation Function) method from the `statsmodels` library, which efficiently computes the autocorrelation values up to a specified lag. By analyzing the autocorrelation values, one can determine whether the power values exhibit any time-dependent structure, which can help in identifying periodicities, noise levels, or potential anomalies in the dataset. This function is a key tool for understanding the temporal properties of the power measurements.

### 5.6 Function to Calculate Fourier Transform

The `calculate_fourier_transform` function performs a Fourier Transform on the time series of power values, which is a mathematical technique used to analyze the frequency components of a signal. The Fourier Transform decomposes a time-domain signal into its constituent frequencies, allowing for the identification of dominant frequency components. This is particularly useful when analyzing periodic behaviors or oscillations within the power data. The function uses the `fft` (Fast Fourier Transform) method from the `scipy.fft` library, which computes the discrete Fourier transform (DFT) of the signal. The output of this function includes the frequencies and corresponding amplitudes, representing how the power values are distributed across different frequency bands. By examining these components, one can gain insights into the underlying frequency characteristics of the data, such as identifying dominant frequencies that may correlate with specific events or behaviors in the system.

### 5.7 Behavior Detection

In the final stage of the algorithm, behavior detection is performed to determine the relevance and significance of the URLs retained after the filtering process. This stage is critical for identifying potentially malicious or anomalous URLs. The process begins with establishing a threshold value, which is determined through a combination of extensive experimentation and leveraging past experiences.

The experimentation phase involves testing various threshold levels against historical data to evaluate their effectiveness in flagging suspicious activities without generating excessive false positives. Insights from previous network security incidents and the specific operational context of the network further refine this threshold. By integrating empirical data with historical knowledge, the threshold is calibrated to balance sensitivity and specificity. Once defined, this threshold becomes the standard against which URL behavior is measured. URLs exhibiting characteristics that surpass this threshold are flagged for further investigation, as they may indicate potential security threats or deviations from normal network behavior.

This behavior detection step transforms filtered data into actionable intelligence, enabling network administrators and security professionals to focus on the most critical and relevant threats. By filtering out noise and highlighting significant anomalies, this stage enhances the cybersecurity framework's overall effectiveness, ensuring the network remains secure against evolving threats.

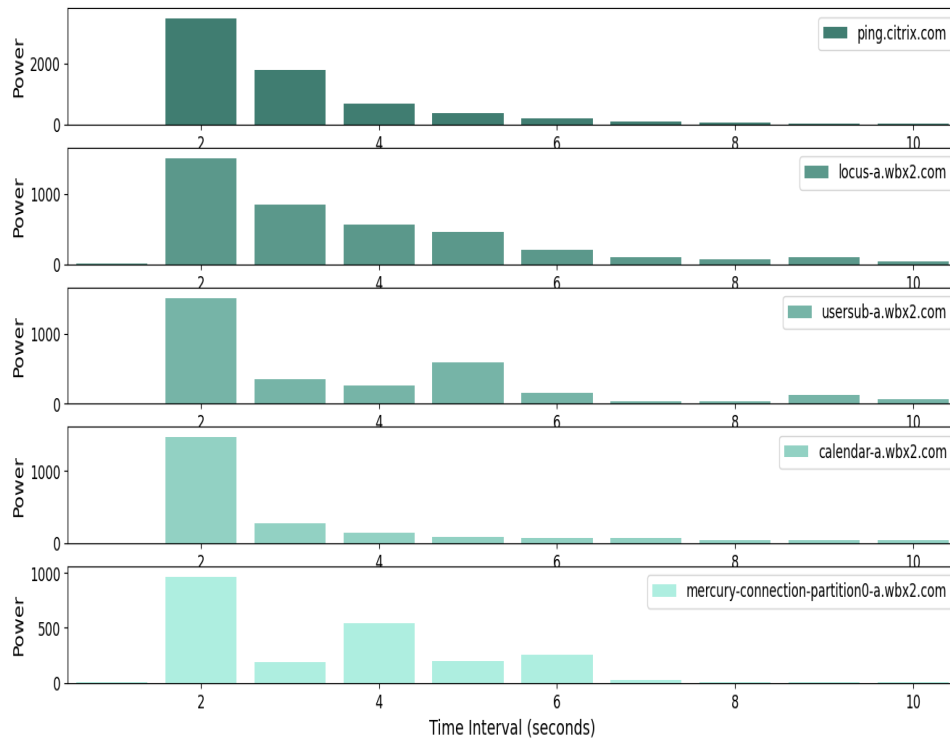


Figure 5.1: Steps of the proposed method

## 5.8 Algorithm Output

The algorithm's output provides a targeted overview of URLs requiring detailed examination. Each URL is compared against a predefined threshold of 500, and those exceeding this threshold are flagged for potential concerns. Such URLs are prioritized for closer investigation due to their deviation from normal behavior, which could indicate possible security threats or unusual activity.

This alert system is essential for prioritizing high-risk URLs, allowing security analysts to concentrate on the most significant issues. By efficiently filtering out less critical data, the system improves threat detection accuracy and minimizes false positives. Analyzing flagged URLs can uncover hidden patterns or attack methods that might otherwise be missed. This proactive alert mechanism is integral to effective threat management, facilitating early detection and response to mitigate risks and safeguard the network against potential breaches.

The algorithm's ability to promptly identify and address potential threats demonstrates its effectiveness in reinforcing network security.

## 5.9 Summary

In this chapter, we delved into the intricacies of preprocessing network activity data, focusing on the creation and utilization of a whitelist and the application of bandpass filtering to enhance data analysis. The primary learnings from this chapter include:

- **Whitelist Creation:**

- We defined a function to create a whitelist by filtering out URLs based on specified exclusion criteria. This function plays a crucial role in curating a subset of URLs for further analysis, ensuring that only relevant and trustworthy URLs are retained.
- We discussed the importance of excluding irrelevant or untrustworthy URLs to improve the accuracy and interpretability of subsequent analyses.
- Performance considerations were examined, highlighting the efficiency of the whitelist creation process and its scalability for larger datasets.

- **Bandpass Filtering:**

- A function for applying bandpass filtering to the power values of network activity data was introduced. This function isolates significant frequency components within a specified range, reducing noise and enhancing the clarity of the dataset.
- The role of bandpass filtering in refining the dataset and focusing on the most relevant data was emphasized, contributing to a more robust understanding of temporal patterns and behaviors within the network.
- We explored the performance implications of the filtering process and discussed potential optimizations for handling large datasets.

- **Functional Analysis:**

- Both functions were defined with detailed explanations of their parameters, functionality, and performance considerations. This structured approach ensures that the functions are well-documented and easy to understand for future use and modification.

- **Function to Calculate Autocorrelation:**

- Computes the autocorrelation of a time series of power values.
- Measures similarity between a signal and its lagged version over time.
- Useful for identifying patterns, periodicity, and trends in the data.
- Uses the `acf` method from the `statsmodels` library to compute autocorrelation values up to a specified lag.
- Helps detect time-dependent structures, periodicities, noise levels, and potential anomalies in the dataset.

- **Function to Calculate Fourier Transform:**



- Performs a Fourier Transform on the time series of power values.
- Decomposes the time-domain signal into its frequency components.
- Useful for analyzing periodic behaviors or oscillations in power data.
- Uses the `fft` method from the `scipy.fft` library to compute the discrete Fourier transform (DFT).
- Provides frequencies and corresponding amplitudes, highlighting dominant frequencies and their correlation with system events or behaviors.

## 5.10 Next Steps

Building on the foundational work presented in this chapter, the next steps involve:

- **Implementing Additional Preprocessing Techniques:**
  - Investigate and implement additional preprocessing techniques to further enhance data quality and relevance. This may include methods such as data normalization, anomaly detection, and more sophisticated filtering techniques.
- **Integrating the Preprocessed Data into Analytical Models:**
  - Utilize the preprocessed data in advanced analytical models to uncover deeper insights into network behavior. This could involve machine learning algorithms, statistical analyses, and other data mining techniques.
- **Evaluating and Validating the Methods:**
  - Perform rigorous evaluation and validation of the preprocessing methods to ensure their effectiveness and reliability. This includes testing the methods on different datasets and scenarios to assess their generalizability and robustness.
- **Automating the Preprocessing Pipeline:**
  - Develop an automated preprocessing pipeline that seamlessly integrates the whitelist creation and bandpass filtering functions. This will streamline the data preparation process, making it more efficient and scalable for real-time applications.
- **Documenting and Sharing Findings:**
  - Document the findings and methodologies in detail to facilitate knowledge sharing and reproducibility. This includes creating comprehensive reports, code documentation, and potentially publishing the results in academic journals or conferences.

By following these next steps, we can build upon the foundation established in this chapter, advancing our understanding and capabilities in network activity data analysis. This progression will not only enhance the accuracy and effectiveness of our analytical models but also contribute to the broader field of network security and behavior analysis.



## 6 Experiments

In this experimental chapter, the algorithm's capability to detect malicious data undergoes a rigorous inspection. Data from various days is collected to encompass various scenarios, ensuring a comprehensive evaluation of the algorithm's performance across different conditions. Once the data is gathered, it is processed through the algorithm to assess its ability to identify potentially harmful content. The primary focus of this chapter lies in evaluating the algorithm's effectiveness in detecting malicious content and its consistency over time. Special attention is given to the URLs flagged as suspicious by the algorithm, which are closely examined to gain deeper insights into their functionality and potential areas for enhancement. By scrutinizing these flagged URLs, the chapter aims to uncover patterns and behaviors that might indicate malicious activity, providing valuable feedback for refining the algorithm. This chapter comprehensively evaluates the algorithm's performance, utilizing real-world data to gauge its effectiveness and explore avenues for improvement. The findings from this analysis not only demonstrate the algorithm's current capabilities but also highlight opportunities for further development, ensuring its continued relevance and robustness in detecting evolving cyber threats. Through this detailed examination, the chapter aims to bolster the algorithm's ability to safeguard the network, contributing to the overall security infrastructure of the system.

### 6.1 Validation and Testing

To affirm the efficacy of beaconing detection, the methodology undergoes rigorous testing using diverse datasets, simulating a range of scenarios that reflect various web traffic patterns. This comprehensive validation process is undertaken to ensure that the algorithm operates reliably across different frequency ranges and adapts seamlessly to the dynamic nature of HTTP requests. By employing datasets that encompass a wide array of traffic behaviors—from normal browsing activities to more erratic patterns indicative of potential security threats—the testing aims to demonstrate the filter's robustness and versatility. Each dataset is crafted to mimic real-world conditions, providing a realistic context for evaluating the bandpass filter's performance. The results from these tests offer critical insights into the filter's ability to isolate relevant frequency components while effectively minimizing noise and irrelevant data.

Furthermore, this validation process helps in identifying any potential weaknesses or limitations of the bandpass filter, guiding subsequent refinements and optimizations. The ultimate goal is to ensure that the beaconing detection consistently enhances the accuracy and reliability of the data analysis, regardless of the variability in web traffic patterns. By confirming its adaptability and precision, this rigorous testing phase substantiates the filter's integral role in the overall methodology, cementing its contribution to the accurate detection and analysis of network behaviors.

### Validation Steps:

1. **Diverse Datasets:** The beaconing detection is subjected to rigorous testing using datasets that exhibit varying frequencies of HTTP requests, each embodying distinct traffic patterns. These datasets are carefully curated to represent a broad range of real-world web traffic scenarios, from sporadic and unpredictable requests to highly regular and predictable beaconing activity. By employing such a diverse set of datasets, the aim is to thoroughly evaluate the filter's adaptability and effectiveness. This comprehensive approach ensures that the filter can robustly identify beaconing activity amidst different traffic environments, including those with fluctuating request intervals, mixed legitimate traffic, and potential noise. Ultimately, this testing strategy is designed to refine the beaconing detection mechanism, enhancing its accuracy and reliability across a wide array of web traffic conditions, thereby improving its practical applicability in detecting malicious or anomalous behavior in varied network contexts.
2. **Performance Metrics:** To evaluate the method's performance, the methodology employs metrics and the preservation of relevant frequency components. These metrics serve as quantitative indicators, allowing for a thorough assessment of the filter's ability to discern and retain meaningful signal components while minimizing noise.
3. **Real-world Scenarios:** The beaconing technique is rigorously evaluated on historical datasets containing documented instances of diverse HTTP request patterns within Allianz Company's network. This real-world testing ensures that the filter can effectively handle the complexities and nuances inherent in actual network traffic scenarios, further validating its practical utility.

By subjecting the method to these comprehensive validation steps, the methodology aims to establish its reliability and robustness in handling a wide array of web traffic patterns. The results obtained from this testing process contribute to the confidence in the filter's performance, reinforcing its role as a valuable tool in the analysis of HTTP request patterns over time.

#### 6.1.1 In-Depth Analysis of Algorithm Output

To assess the accuracy of the algorithm's identification of malicious behavior, a verification process was executed, which involved systematically evaluating the algorithm's outputs against known benchmarks. The initial findings from this process unveiled patterns that hinted at possible malicious behavior, indicating that the algorithm was effectively identifying anomalies consistent with malicious activities. This verification process is critical for ensuring the reliability and robustness of the algorithm in real-world applications, as it confirms the algorithm's ability to detect subtle and complex patterns indicative of potential security threats.

To further refine the focus of the analysis, Figure ?? provides a detailed snapshot of the data from a particular day, highlighting specific areas where suspicious activity may be present. This figure showcases the URLs identified by the algorithm, each accompanied by a distinct time interval and power level. The next critical step involves detecting the behavior of these URLs to accurately report beaconing malicious behavior. This process requires checking the power levels of these URLs against a predefined threshold value. The threshold value was selected

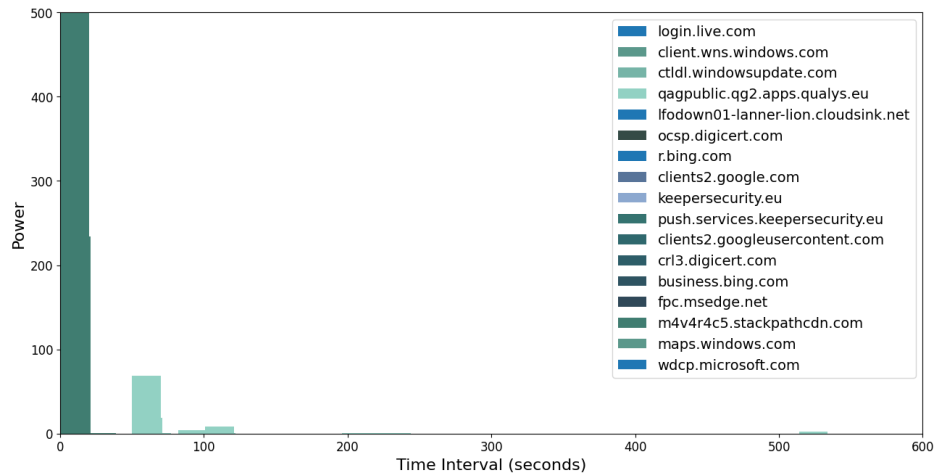


Figure 6.1: Testing Data

after numerous experiments and relies heavily on the analyst's expertise and experience to ensure its accuracy and reliability.

To enhance clarity and isolate the most significant indicators of potential malicious activity, Figure ?? presents only those URLs that have exceeded the established threshold, which in this instance is set at 500. This strategic filtering immediately draws attention to the URL 'm4v4r4c5.stackpathcdn.com', which exhibits behavior that warrants closer scrutiny due to its elevated power levels. By isolating this particular domain from the broader dataset, the figure reveals a significant peak during a specific time interval, indicating a moment of heightened activity.

This peak is particularly noteworthy as it signifies that during the specified time interval, the power associated with 'm4v4r4c5.stackpathcdn.com' reached an unusually high value of 2877. This substantial power level is well above the predetermined threshold, clearly indicating an abnormal and potentially malicious pattern of activity. The suspicious behavior was observed within the time interval of 10-12, marking this period as a critical window for further investigation.

The isolation and examination of these peaks are important for understanding the nature of the potential threat. By focusing on the time intervals and power levels that exceed the threshold, analysts can more effectively identify and interpret patterns indicative of beaconing malicious behavior. This detailed approach underscores the importance of combining algorithmic outputs with the analyst's expertise to detect and respond to potential security threats accurately. It highlights how the rigorous verification process, alongside the use of targeted metrics and thresholds, enhances the ability to discern meaningful signals from noise, thereby improving the overall effectiveness of the beaconing detection methodology. This thorough analysis not only aids in identifying immediate threats but also contributes to the ongoing refinement of detection techniques, ensuring they remain robust and reliable in the face of

## 6 Experiments

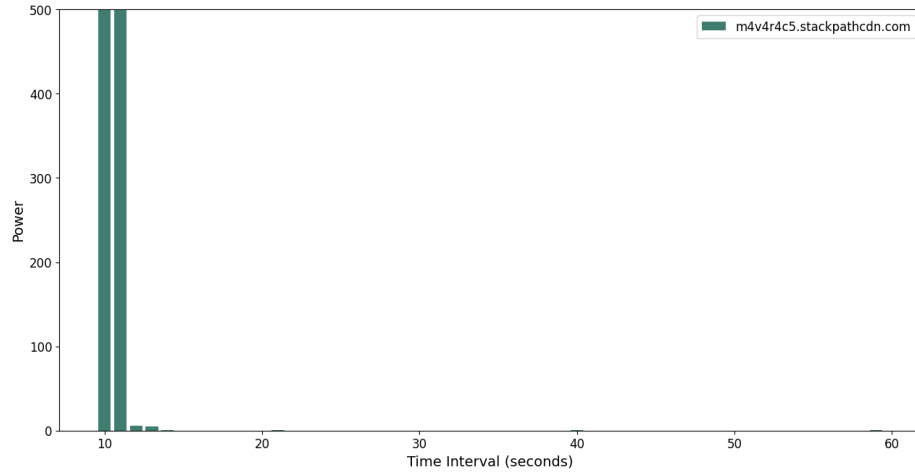


Figure 6.2: Malicious Domain

evolving web traffic scenarios and potential malicious activities.

Upon the identification of the URL, the subsequent analysis unveiled clear indicators suggesting malicious intent within the algorithm's output. To verify the authenticity of these suspicions, a comprehensive inquiry was launched into the nature of the detected behavior, aimed at determining whether it unequivocally originated from a malicious URL source. This inquiry involved a detailed examination of the URL's historical footprint, which uncovered a disconcerting pattern of activity. It became evident that a particular user had persistently engaged in phishing tactics, repeatedly attempting to access and manipulate the URL for nefarious purposes. Such deliberate and systematic actions underscored the malicious nature of the user's intentions. Recognizing the severity of the situation, immediate action was taken to alert cybersecurity experts, thereby initiating a thorough examination and swift resolution of the identified security breach.

The investigation revealed that the user behind the malicious activity employed sophisticated techniques to mask their actions, making detection more challenging. This necessitated a deeper dive into the user's digital footprint, examining IP addresses, timestamps, and the nature of the requests made to the URL. The collected evidence pointed to a concerted effort to exploit vulnerabilities within the system, highlighting the importance of the initial algorithmic detection and the subsequent manual analysis in identifying and mitigating the threat.

Furthermore, to thoroughly evaluate the algorithm's effectiveness, a comprehensive analysis was conducted on the data gathered across multiple days. This longitudinal study allowed for the identification of recurring patterns or evolving trends that may signify malicious intent. The subsequent sections present the results derived from the algorithm's examination of each day's data, providing insights into the consistency and reliability of the algorithm in detecting suspicious activities. By comparing daily outputs, analysts could identify not only persistent threats but also new and emerging ones, thereby enhancing the overall security posture.

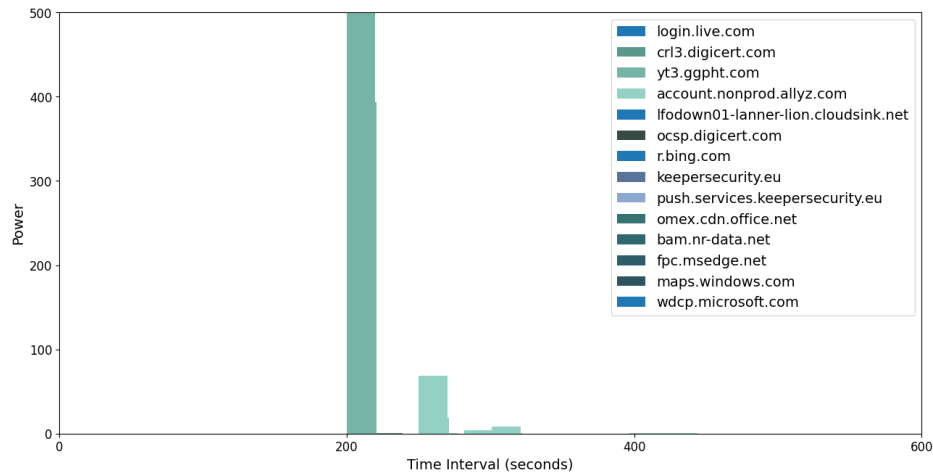


Figure 6.3: Testing Data

The analysis also involved cross-referencing the detected malicious activities with known threat databases to determine if the identified URL and user behavior matched any previously recorded cyber threats. This step was key in understanding the broader context of the threat and in developing appropriate countermeasures. The collaboration with cybersecurity experts ensured that the findings were promptly addressed, and preventative measures were implemented to safeguard against future attacks.

In summary, the identification of the URL and the subsequent in-depth analysis highlighted the importance of a multi-layered approach to cybersecurity. The combination of advanced algorithms, historical data analysis, and expert intervention provided a robust framework for detecting and responding to malicious activities. This approach not only addressed the immediate threat but also contributed to the ongoing refinement of detection techniques, ensuring they remain effective against evolving cyber threats.

The figures below provide comprehensive snapshots of online activity on different days, highlighting key patterns and anomalies. In the figure ??, a detailed log documents the internet activity of a specific individual on a particular day. This log outlines the various websites visited, including both innocuous sites and one that raised suspicions. The figure shows the output of an algorithm designed to detect malicious behavior, marking the beginning of a detailed analysis.

The focus of this analysis is to look over all URLs that exhibit a specific power level. The algorithm identifies URLs with notable peaks in the output, particularly those with power levels exceeding a predetermined threshold value. This threshold was established through extensive experimentation and expert analysis, ensuring its effectiveness in filtering out benign activity while highlighting potential threats.

Shifting the focus to Figure ??, this figure zooms in on a specific timeframe, offering a closer examination of a particular website's behavior. During the period from 200 to 220, there was

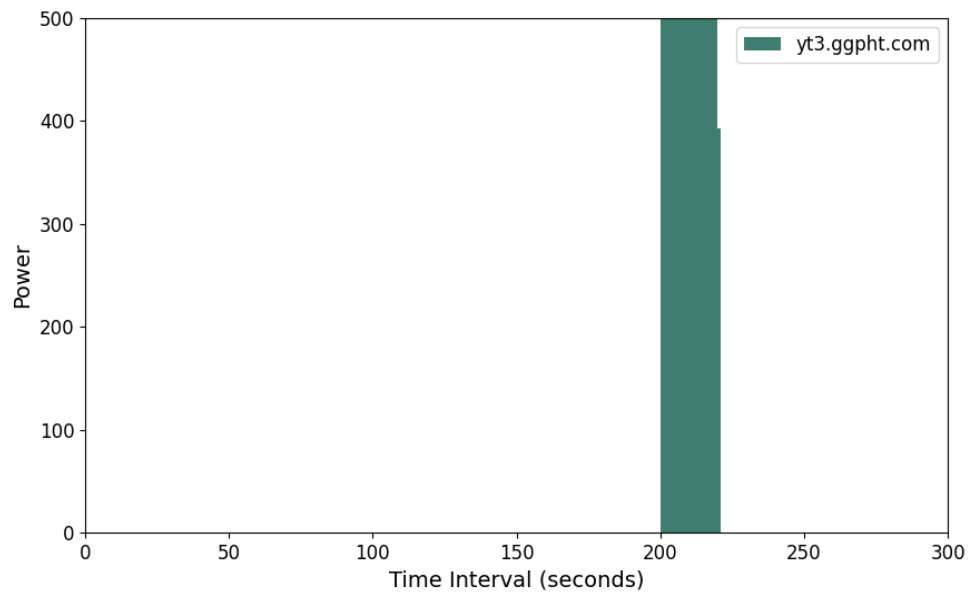


Figure 6.4: Malicious Domain

a notable surge in activity on 'yt3.ggpht.com', which deviated significantly from its usual patterns. This irregularity prompted a deeper analysis, revealing indications of potentially malicious beaconing behavior.

The subsequent investigation into 'yt3.ggpht.com' confirmed the presence of unauthorized activity on the website. This finding underscores the critical importance of such monitoring systems in identifying and addressing cybersecurity threats. By highlighting irregular patterns and behaviors, these systems act as vigilant guardians, ensuring the safety and integrity of digital spaces.

These visual representations play a vital role in maintaining online security. They not only facilitate the detection of malicious activity but also aid in the timely response to emerging threats. The detailed logs and focused analyses presented in Figures ?? and ?? exemplify the effectiveness of combining algorithmic detection with expert scrutiny experiences. This approach ensures that suspicious activities are not only identified but also thoroughly investigated and mitigated.

The integration of advanced algorithms and detailed visual representations provides a robust framework for monitoring and securing online environments. By continuously analyzing web traffic and identifying anomalies, these systems help protect against unauthorized activities and potential cyber threats. This multi-layered approach is essential for maintaining the integrity and security of digital spaces in an increasingly connected world.



## 7 Results and Discussions

The implementation of the methodology within Allianz Company's network infrastructure represents a pivotal advancement in enhancing network security and resilience. This chapter provides a detailed discussion of how beaconing behavior can be effectively detected and the impact of periodicity in network communication on the detection of malicious behavior. The methodology's application involved several key steps, each contributing to the robustness of the network monitoring and security measures.

### 7.1 Detection of Beaconing Behavior

To address the question of how beaconing behavior can be effectively detected within Allianz Company's network, several strategies and methodologies were employed and evaluated:

#### 7.1.1 Algorithm Development and Implementation

The core of the detection process involved the development and implementation of advanced algorithms tailored to identify beaconing behavior. These algorithms were designed to analyze network traffic for recurring patterns indicative of beaconing. Key methods included:

- **Pattern Recognition Algorithms:** These algorithms scan for regular intervals in network communication, a hallmark of beaconing activity often used by malware to maintain contact with a command-and-control server.
- **Threshold Analysis:** A critical component of the detection system involved setting thresholds for communication frequencies. URLs with communication intervals exceeding these thresholds were flagged for further investigation.

#### 7.1.2 Data Collection and Preprocessing

Effective detection required comprehensive data collection and preprocessing:

- **Network Monitoring:** Continuous monitoring captured a wide array of network activities, including data packets, source and destination addresses, timestamps, and communication frequencies.
- **Filtering and Aggregation:** Known benign traffic was filtered out, and similar types of communication were aggregated to reduce noise and focus on potentially malicious activities.

### 7.1.3 Validation and Testing

To ensure the effectiveness of the detection methods:

- **Synthetic and Real-World Data:** The algorithm was tested on both synthetic datasets and real-world traffic from Allianz's network.
- **Integration with Existing Systems:** The detection mechanisms were integrated with Security Information and Event Management (SIEM) systems to enable automated alerts and responses, and incident response teams were notified for further investigation.

## 7.2 Impact of Periodicity in Network Communication

The second research question addresses the impact of periodicity in network communication on the detection of malicious behavior. Periodicity significantly affects detection capabilities, as detailed below:

### 7.2.1 Identification of Regular Intervals

- **Time-Series Analysis:** Network traffic was analyzed as time-series data to detect regular communication intervals. Techniques such as bandpass filtering was employed to identify periodic patterns.
- **Baseline Establishment:** A baseline of normal network behavior was established to identify deviations that might indicate malicious activity. Communication frequencies that deviated from this baseline were flagged as suspicious.

### 7.2.2 Differentiation Between Benign and Malicious Periodicity

- **Contextual Analysis:** Not all periodic communications are indicative of malicious behavior. Contextual analysis helped distinguish between normal periodic activities (e.g., scheduled updates) and potentially harmful beaconing.
- **Anomaly Detection Algorithms:** Algorithms trained on periodicity patterns of normal traffic helped identify anomalies. Techniques such as clustering and classification were used to differentiate benign from malicious behavior.

### 7.2.3 Impact on False Positives and Negatives

- **Reduction of False Positives:** Accurate modeling of normal periodic patterns helped reduce the number of false positives, ensuring that alerts were actionable.
- **Handling False Negatives:** Sensitivity adjustments in detection algorithms ensured that subtle periodic patterns associated with stealthy beaconing were not missed, minimizing false negatives.

#### 7.2.4 Case Studies and Empirical Evidence

- **Real-World Examples:** Analysis of real-world cases of beaconing behavior provided empirical evidence on the effectiveness of periodicity-based detection methods.
- **Continuous Learning and Adaptation:** The detection system was designed to adapt to evolving patterns of network traffic, ensuring ongoing effectiveness in identifying new and emerging threats.

The comprehensive evaluation of the methodology demonstrated its efficacy in handling diverse network traffic scenarios and real-world cybersecurity challenges. The methodology, which included advanced algorithms for detecting beaconing behavior, robust data preprocessing techniques, and the use of periodicity in network communication, proved effective in identifying and mitigating malicious activities. The integration of these methods with Allianz Company's existing security infrastructure highlighted the importance of continuous monitoring and proactive response strategies in maintaining network security. The promising results from this implementation provide a strong foundation for future research and further enhancement of network security measures.



## 8 Conclusion and Future Work

### 8.1 Conclusion

The thorough study of the dataset provided valuable insights into network security, particularly in the detection of beaconing activities that may indicate potential threats. This examination involved a deep dive into the data, encompassing its various aspects and collection methods, which laid a solid foundation for understanding how networks can detect and respond to suspicious signals effectively.

Systematic data collection, cleaning, and processing were important to ensuring the dataset's accuracy and reliability. The gathering of relevant information, removal of inconsistencies or errors, and careful preparation for analysis were essential steps that validated the conclusions drawn from the data. These steps ensured that the findings were both accurate and actionable.

A significant component of the methodology was the implementation of a "whitelist" mechanism alongside specialized filtering and analysis techniques. The whitelist, which consists of trusted entities or activities within the network, plays an important role in focusing attention on potentially harmful signals while minimizing the impact of irrelevant noise. This strategic filtering enhanced the network's ability to detect threats more effectively by isolating and addressing only the potentially malicious activities.

The evaluation of time intervals between actions, combined with data enhancement techniques and specialized filtering methods, yielded valuable insights into potential malicious beaconing activity. These analyses illuminated underlying patterns and behaviors within the network, aiding in the identification of anomalies that could signify suspicious or harmful actions. The study highlighted the importance of proactive monitoring and response strategies in mitigating cybersecurity risks, demonstrating the broader significance of data-driven methodologies in fortifying network security.

In an era where organizations face increasingly sophisticated cyber threats, the insights from this research can guide strategic decision-making and resource allocation. By leveraging these findings, organizations can enhance their protection of critical digital assets and bolster their defenses against evolving threats.

### 8.2 Future Work

Building on the findings and methodology presented in this study, several promising avenues for future research and development can be explored:

1. **Enhanced Detection Algorithms:** Refining and optimizing beaconing detection algorithms can significantly improve accuracy and reduce false positives. Future research could explore novel approaches, such as deep learning techniques, which may provide

new insights into anomaly detection in network behavior. These advancements could lead to more effective threat mitigation strategies and enhanced detection capabilities.

2. **Real-Time Monitoring Solutions:** Investigating real-time monitoring solutions can enable prompt detection and response to emerging threats, thereby minimizing potential damages caused by malicious activities. The development of automated response mechanisms could streamline incident response procedures, reducing the burden on cybersecurity personnel and enhancing the overall efficiency of threat management.
3. **Behavioral Analysis Across Diverse Networks:** Extending the study to analyze network behavior across a variety of organizational networks can reveal commonalities and variations in malicious activities. Understanding the unique challenges faced by different industries and sectors could lead to the development of tailored security measures that address specific threats more effectively. This cross-network analysis could provide valuable insights into how different environments respond to and manage cybersecurity risks.
4. **Integration with Machine Learning Techniques:** Exploring the integration of advanced machine learning techniques for anomaly detection can augment the capabilities of beaconing detection systems. Leveraging historical data and learning from past incidents can help these systems adapt to evolving cybersecurity threats, enhancing proactive defense mechanisms. Machine learning models can be trained to recognize subtle patterns and adapt to new types of attacks, improving overall detection and response.
5. **Collaborative Research Initiatives:** Engaging in collaborative research with industry partners and cybersecurity experts can foster innovation and the development of proactive security solutions. Joint research initiatives can facilitate the exchange of knowledge and resources, addressing complex cybersecurity challenges more effectively. Collaboration can lead to the creation of comprehensive solutions that benefit from diverse expertise and perspectives, driving progress in the field of network security.

Pursuing these avenues for future research and development will help advance the field of cybersecurity, strengthening defenses against emerging threats and safeguarding the integrity of digital infrastructures. By continuing to innovate and adapt, the cybersecurity community can better protect critical assets and respond to the dynamic landscape of cyber threats.

# A Appendix

## A.1 Algorithm Implementation

```
1 from influxdb.client import InfluxDBClient
2 from datetime import datetime
3 import pandas as pd
4 import matplotlib.pyplot as plt
5 from scipy.signal import butter, filtfilt
6
7 # Function to calculate request power
8 def calculate_request_power(request_list):
9     power_dictionary = {}
10    last_date_time = request_list[0]["_time"]
11
12    for request_dict in request_list:
13        current_date_time = request_dict["_time"]
14
15        # Check if current_date_time is a string, and convert it to a
16        # datetime object
17        if isinstance(current_date_time, str):
18            current_date_time = datetime.strptime(current_date_time, "%Y-%m-%
19            dT%H:%M:%S.%fZ")
20
21        time_delta = int((current_date_time - last_date_time).total_seconds()
22        )
23
24        # Add the power to the power dictionary
25        power_dictionary[time_delta] = power_dictionary.get(time_delta, 0) +
26        1
27        last_date_time = current_date_time
28
29        # Sort the dictionary for better visualization
30        power_dictionary = dict(sorted(power_dictionary.items()))
31
32    return power_dictionary
33
34 # Function to apply bandpass filtering in terms of time
35 def bandpass_filter(data, lowcut_time, highcut_time, sampling_rate, order=4):
36     nyquist = 0.5 * sampling_rate
37     lowcut = lowcut_time / nyquist
38     highcut = highcut_time / nyquist
39
40     if lowcut >= 1 or highcut >= 1:
41         raise ValueError("Digital filter critical frequencies must be 0 < Wn
42         < 1")
```

```

39     b, a = butter(order, [lowcut, highcut], btype='band')
40     filtered_data = filtfilt(b, a, data)
41     return filtered_data
42
43     # InfluxDB connection details
44     url = "http://localhost:8086"
45     token = "*****"
46     org = "Student"
47     bucket = "Net"
48     influx_username = '*****'
49     influx_password = '*****'
50
51     try:
52         # Create an InfluxDB client
53         client = InfluxDBClient(url=url, token=token, org=org)
54
55         # Query data from InfluxDB
56         query = f'from(bucket:"{bucket}") -> range(start: 2023-08-01T00:00:00Z,
57             stop: 2023-08-02T00:00:00Z)'
58         tables = client.query_api().query(query, org=org)
59
60         # Extract points from the result
61         points = [record.values for table in tables for record in table.records]
62
63         # Process and organize the InfluxDB data
64         print("Processing InfluxDB Data:")
65         extracted_influx_objects = {}
66
67         for point in points:
68             url_hostname = point.get("url_hostname")
69
70             # Check if url_hostname is already in the dictionary
71             if url_hostname not in extracted_influx_objects:
72                 extracted_influx_objects[url_hostname] = []
73
74             # Append under the corresponding url_hostname
75             extracted_influx_objects[url_hostname].append(point)
76
77             # Print the extracted InfluxDB data for debugging
78             print(point)
79
80         # Create a whitelist to filter out unwanted URLs
81         def create_whitelist(data, exclusion_criteria):
82             whitelist = {url: requests for url, requests in data.items() if not
83                 any(exclusion in url for exclusion in exclusion_criteria)}
84             return whitelist
85
86         # Define exclusion criteria for URLs
87         exclusion_criteria = ['allianz', 'res']
88
89         # Create a whitelist based on the exclusion criteria
90         whitelist = create_whitelist(extracted_influx_objects, exclusion_criteria)

```



```

90 print("Filtered URLs based on whitelist:")
91 for url_hostname in whitelist:
92     print(url_hostname)
93
94 # Create a table of power for each URL hostname with bandpass filtering
   in terms of time
95 print("nPower Table with Bandpass Filtering in Terms of Time:")
96 for url_hostname, requests in whitelist.items():
97     print(f"URL Hostname: {url_hostname}")
98     power_dictionary = calculate_request_power(requests)
99
100 # Print the power dictionary for debugging
101 print("Power Dictionary:", power_dictionary)
102
103 # Extract keys and values from the power dictionary
104 time_intervals = list(power_dictionary.keys())
105 power_values = list(power_dictionary.values())
106
107 # Apply bandpass filtering in terms of time
108 lowcut_time = 5 # 5 seconds
109 highcut_time = 1000 # 1000 seconds
110
111 # Check if there are enough elements to calculate sampling rate
112 if len(time_intervals) >= 2:
113     sampling_rate = 1.0 / (time_intervals[1] - time_intervals[0]) #
        Sampling frequency
114
115     try:
116         filtered_power_values = bandpass_filter(power_values, lowcut_
            time, highcut_time, sampling_rate)
117     except ValueError as e:
118         print(f"Error: {e}")
119         filtered_power_values = power_values
120
121 # Print the filtered power values for debugging
122 print("Filtered Power Values:", filtered_power_values)
123
124 # Calculate the average power
125 average_power = sum(filtered_power_values) / len(filtered_power_
    values)
126
127 # Print the average power for debugging
128 print("Average Power:", average_power)
129
130 # Subtract average power from all power values
131 adjusted_power_values = [power - average_power for power in
    filtered_power_values]
132
133 # Print the adjusted power values for debugging
134 print("Adjusted Power Values:", adjusted_power_values)
135
136 # Remove negative powers
137 non_negative_power_values = [max(0, power) for power in adjusted_
    power_values]

```

```

138
139     # Get indices for the time range of interest (5 to 1000 seconds)
140     time_range_indices = [i for i, t in enumerate(time_intervals) if
141                           5 <= t <= 1000]
142
143     # Print the time range indices for debugging
144     print("Time Range Indices:", time_range_indices)
145
146     # Plot the adjusted data within the specified time range
147     plt.plot([time_intervals[i] for i in time_range_indices], [non_
148                   negative_power_values[i] for i in time_range_indices], label=
149                   url_hostname)
150
151     # Check if there are multiple URLs in the whitelist before creating
152     # legend
153     if len(whitelist) > 1:
154         plt.legend()
155
156     plt.xlabel("Time Interval (seconds)") # Change x-axis label
157     plt.ylabel("Adjusted Power") # Change y-axis label
158     plt.title("Adjusted Power over Time") # Change the chart title
159     plt.show()
160
161 except Exception as e:
162     print(f"An error occurred: {e}")

```

## A.2 Data Analysis Implementation

```

1 import pandas as pd
2 import matplotlib.pyplot as plt
3 from scipy.signal import butter, filtfilt
4
5 # Function to calculate request occurrence
6 def calculate_request_occurrence(request_list):
7     occurrence_dictionary = {}
8     last_date_time = None
9
10    for _, request_row in request_list.iterrows():
11        try:
12            current_date_time = pd.to_datetime(request_row["time"])
13
14            if last_date_time is not None:
15                time_delta = int((current_date_time - last_date_time).total_
16                                seconds())
17
18                # Add the occurrence to the occurrence dictionary
19                occurrence_dictionary[time_delta] = occurrence_dictionary.get(
20                    time_delta, 0) + 1
21
22            last_date_time = current_date_time

```

```

22     except (ValueError, TypeError) as e:
23         print(f"Error in row: {-}, Timestamp value: {request_row['_time']}
24             }, Error message: {e}")
25
26     # Sort the dictionary for better visualization
27     occurrence_dictionary = dict(sorted(occurrence_dictionary.items()))
28
29     return occurrence_dictionary
30
31 # Function to apply bandpass filtering in terms of time
32 def bandpass_filter(data, lowcut_time, highcut_time, sampling_rate, order=4):
33     nyquist = 0.5 * sampling_rate
34     lowcut = lowcut_time / nyquist
35     highcut = highcut_time / nyquist
36
37     if lowcut >= 1 or highcut >= 1:
38         raise ValueError("Digital filter critical frequencies must be 0 < Wn
39             < 1")
40
41     b, a = butter(order, [lowcut, highcut], btype='band')
42     filtered_data = filtfilt(b, a, data)
43     return filtered_data
44
45 # CSV file path for the cleaned and modified data
46 csv_file_path = r'C:\Allianz\4\1125\Modified_Beaconing.csv'
47
48 try:
49     # Read data from CSV file and explicitly convert "_time" to datetime
50     df = pd.read_csv(csv_file_path)
51     df["_time"] = pd.to_datetime(df["_time"], format='%H:%M:%S.%f', errors='
52         coerce')
53
54     # Process and organize the CSV data
55     print("Processing CSV Data:")
56     extracted_csv_objects = {}
57
58     for _, row in df.iterrows():
59         url_hostname = row.get("url_hostname")
60
61         # Check if url_hostname is already in the dictionary
62         if url_hostname not in extracted_csv_objects:
63             extracted_csv_objects[url_hostname] = []
64
65         # Append under the corresponding url_hostname
66         extracted_csv_objects[url_hostname].append(row)
67
68         # Print the extracted CSV data for debugging
69         print(row)
70
71     # Create a whitelist to filter out unwanted URLs
72     def create_whitelist(data, exclusion_criteria):
73         whitelist = {url: requests for url, requests in data.items() if not
74             any(exclusion in url for exclusion in exclusion_criteria)}
75         return whitelist

```

```

72
73 # Define exclusion criteria for URLs
74 exclusion_criteria = ['allianz', 'res']
75
76 # Create a whitelist based on the exclusion criteria
77 whitelist = create_whitelist(extracted_csv_objects, exclusion_criteria)
78
79 print("Filtered URLs based on whitelist:")
80 for url_hostname in whitelist:
81     print(url_hostname)
82
83 # Create a table of occurrence for each URL hostname with bandpass
84     filtering in terms of time
85 print("nOccurrence Table with Bandpass Filtering in Terms of Time:")
86 peak_url_hostname = None
87 peak_occurrence_value = 0
88 for url_hostname, requests in whitelist.items():
89     print(f"URL Hostname: {url_hostname}")
90     occurrence_dictionary = calculate_request_occurrence(pd.DataFrame(
91         requests))
92
93     # Print the occurrence dictionary for debugging
94     print("Occurrence Dictionary:", occurrence_dictionary)
95
96     # Identify peak occurrence value and corresponding URL hostname
97     if occurrence_dictionary:
98         max_occurrence_value = max(occurrence_dictionary.values())
99         if max_occurrence_value > peak_occurrence_value:
100             peak_occurrence_value = max_occurrence_value
101             peak_url_hostname = url_hostname
102
103     # Extract keys and values from the occurrence dictionary
104     time_intervals = list(occurrence_dictionary.keys())
105     occurrence_values = list(occurrence_dictionary.values())
106
107     # Apply bandpass filtering in terms of time
108     lowcut_time = 5 # 5 seconds
109     highcut_time = 1000 # 1000 seconds
110
111     # Check if there are enough elements to calculate sampling rate
112     if len(time_intervals) >= 2:
113         sampling_rate = 1.0 / (time_intervals[1] - time_intervals[0]) #
114             Sampling frequency
115
116         try:
117             filtered_occurrence_values = bandpass_filter(occurrence_
118                 values, lowcut_time, highcut_time, sampling_rate)
119         except ValueError as e:
120             print(f"Error: {e}")
121             filtered_occurrence_values = occurrence_values
122
123     # Print the filtered occurrence values for debugging
124     print("Filtered Occurrence Values:", filtered_occurrence_values)

```

```

122     # Calculate the average occurrence
123     average_occurrence = sum(filtered_occurrence_values) / len(
        filtered_occurrence_values)
124
125     # Print the average occurrence for debugging
126     print("Average Occurrence:", average_occurrence)
127
128     # Subtract average occurrence from all occurrence values
129     adjusted_occurrence_values = [occurrence - average_occurrence for
        occurrence in filtered_occurrence_values]
130
131     # Print the adjusted occurrence values for debugging
132     print("Adjusted Occurrence Values:", adjusted_occurrence_values)
133
134     # Remove negative occurrences
135     non_negative_occurrence_values = [max(0, occurrence) for
        occurrence in adjusted_occurrence_values]
136
137     # Get indices for the time range of interest (5 to 1000 seconds)
138     time_range_indices = [i for i, t in enumerate(time_intervals) if
        5 <= t <= 1000]
139
140     # Print the time range indices for debugging
141     print("Time Range Indices:", time_range_indices)
142
143     # Plot the adjusted data within the specified time range
144     plt.plot([time_intervals[i] for i in time_range_indices], [non-
        negative_occurrence_values[i] for i in time_range_indices],
        label=url_hostname)
145
146     # Print the URL hostname with the peak occurrence
147     if peak_url_hostname:
148         print(f"nURL Hostname with Peak Occurrence: {peak_url_hostname}")
149         print(f"Peak Occurrence Value: {peak_occurrence_value}")
150
151     # Check if there are multiple URLs in the whitelist before creating
        legend
152     if len(whitelist) > 1:
153         plt.legend()
154
155     plt.xlabel("Time Interval (seconds)") # Change x-axis label
156     plt.ylabel("Adjusted Occurrence") # Change y-axis label
157     plt.title("Adjusted Occurrence over Time") # Change the chart title
158     plt.show()
159
160 except Exception as e:
161     print(f"An error occurred: {e}")

```



# Bibliography

- [1] Bitdefender, “Global cybersecurity threat map,” accessed: 2024-08-13. [Online]. Available: <https://threatmap.bitdefender.com/>
- [2] InfluxData, “Influxdb 3.0 system architecture,” accessed: 2024-08-13. [Online]. Available: <https://www.influxdata.com/blog/influxdb-3-0-system-architecture/>
- [3] X. Hu, J. Jang, M. P. Stoecklin, T. Wang, D. L. Schales, D. Kirat, and J. R. Rao, “Baywatch: robust beaconing detection to identify infected hosts in large-scale enterprise networks,” in *2016 46th Annual IEEE/IFIP International Conference on Dependable Systems and Networks (DSN)*. IEEE, 2016, pp. 479–490.
- [4] Y. Zhang, H. Dong, A. Nottingham, M. Buchanan, D. E. Brown, and Y. Sun, “Global analysis with aggregation-based beaconing detection across large campus networks,” in *ACSAC '23: Proceedings of the 39th Annual Computer Security Applications Conference*, 2023, pp. 565–579.
- [5] G. Apruzzese, M. Marchetti, M. Colajanni, G. G. Zoccoli, and A. Guido, “Identifying malicious hosts involved in periodic communications,” in *2017 IEEE 16th International Symposium on Network Computing and Applications (NCA)*. IEEE, 2017, pp. 1–8.
- [6] J. Seo and S. Lee, “Abnormal behavior detection to identify infected systems using the apchain algorithm and behavioral profiling,” *Security and Communication Networks*, vol. 2018, no. 1, p. 9706706, 2018.
- [7] N. A. Huynh, W. K. Ng, A. Ulmer, and J. Kohlhammer, “Uncovering periodic network signals of cyber attacks,” in *2016 IEEE Symposium on Visualization for Cyber Security (VizSec)*. IEEE, 2016, pp. 1–8.
- [8] J. Jang, D. H. Kirat, B. J. Kwon, D. L. Schales, and M. P. Stoecklin, “Detecting malicious beaconing communities using lockstep detection and co-occurrence graph,” Jan. 5 2021, uS Patent 10,887,323.
- [9] M. A. Talib, Q. Nasir, A. B. Nassif, T. Mokhamed, N. Ahmed, and B. Mahfood, “Apt beaconing detection: A systematic review,” *Computers & Security*, vol. 122, p. 102875, 2022.
- [10] P. S. Charan, P. M. Anand, and S. K. Shukla, “Dmapt: Study of data mining and machine learning techniques in advanced persistent threat attribution and detection,” *Data Mining-Concepts and Applications*, p. 63, 2021.

## Bibliography

- [11] M. Hagan, B. Kang, K. McLaughlin, and S. Sezer, "Peer based tracking using multi-tuple indexing for network traffic analysis and malware detection," in *2018 16th Annual Conference on Privacy, Security and Trust (PST)*. IEEE, 2018, pp. 1–5.
- [12] A. Shalaginov, K. Franke, and X. Huang, "Malware beaconing detection by mining large-scale dns logs for targeted attack identification," *International Journal of Computer and Systems Engineering*, vol. 10, no. 4, pp. 743–755, 2016.
- [13] Y.-R. Yeh, T. C. Tu, M.-K. Sun, S. M. Pi, and C.-Y. Huang, "A malware beacon of botnet by local periodic communication behavior," in *2018 IEEE 42nd Annual Computer Software and Applications Conference (COMPSAC)*, vol. 2. IEEE, 2018, pp. 653–657.
- [14] Y. Borchani, "Advanced malicious beaconing detection through ai," *Network Security*, vol. 2020, no. 3, pp. 8–14, 2020.
- [15] M. A. Enright, E. Hammad, and A. Dutta, "A learning-based zero-trust architecture for 6g and future networks," in *2022 IEEE Future Networks World Forum (FNWF)*. IEEE, 2022, pp. 64–71.
- [16] T. Van Ede, H. Aghakhani, N. Spahn, R. Bortolameotti, M. Cova, A. Continella, M. van Steen, A. Peter, C. Kruegel, and G. Vigna, "Deepcase: Semi-supervised contextual analysis of security events," in *2022 IEEE Symposium on Security and Privacy (SP)*. IEEE, 2022, pp. 522–539.
- [17] T. Ongun, O. Spohngellert, B. Miller, S. Boboila, A. Oprea, T. Eliassi-Rad, J. Hiser, A. Nottingham, J. Davidson, and M. Veeraraghavan, "Portfiler: port-level network profiling for self-propagating malware detection," in *2021 IEEE Conference on Communications and Network Security (CNS)*. IEEE, 2021, pp. 182–190.
- [18] W. Niu, X. Zhang, X. Zhang, X. Du, X. Huang, M. Guizani *et al.*, "Malware on internet of uavs detection combining string matching and fourier transformation," *IEEE Internet of Things Journal*, vol. 8, no. 12, pp. 9905–9919, 2020.
- [19] J. Duan, Z. Zeng, A. Oprea, and S. Vasudevan, "Automated generation and selection of interpretable features for enterprise security," in *2018 IEEE International Conference on Big Data (Big Data)*. IEEE, 2018, pp. 1258–1265.
- [20] M. Haffey, M. Arlitt, and C. Williamson, "Modeling, analysis, and characterization of periodic traffic on a campus edge network," in *2018 IEEE 26th International Symposium on Modeling, Analysis, and Simulation of Computer and Telecommunication Systems (MAS-COTS)*. IEEE, 2018, pp. 170–182.
- [21] A. Oprea, Z. Li, R. Norris, and K. Bowers, "Made: Security analytics for enterprise threat detection," in *Proceedings of the 34th Annual Computer Security Applications Conference*, 2018, pp. 124–136.
- [22] M. Ukrop, L. Kraus, V. Matyas, and H. A. M. Wahsheh, "Will you trust this tls certificate? perceptions of people working in it," in *Proceedings of the 35th annual computer security applications conference*, 2019, pp. 718–731.



- [23] T. Vissers, J. Spooren, P. Agten, D. Jumpertz, P. Janssen, M. Van Wesemael, F. Piessens, W. Joosen, and L. Desmet, “Exploring the ecosystem of malicious domain registrations in the. eu tld,” in *Research in Attacks, Intrusions, and Defenses: 20th International Symposium, RAID 2017, Atlanta, GA, USA, September 18–20, 2017, Proceedings*. Springer, 2017, pp. 472–493.